



**ELECTRONIC COPY**

**LABORATORY GROWN DIAMOND REPORT**

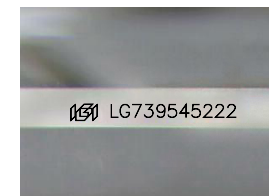
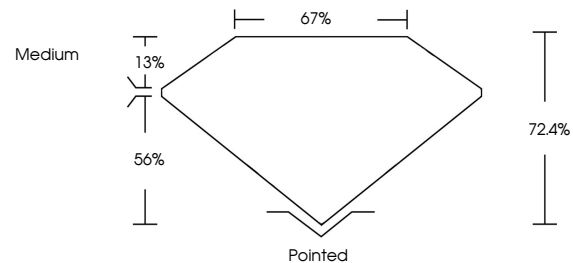
October 10, 2025  
IGI Report Number **LG739545222**  
Description **LABORATORY GROWN DIAMOND**  
Shape and Cutting Style **PRINCESS CUT**  
Measurements **6.68 X 6.56 X 4.75 MM**  
**GRADING RESULTS**  
Carat Weight **1.89 CARAT**  
Color Grade **FANCY PINK BROWN**  
Clarity Grade **VVS 2**

**ADDITIONAL GRADING INFORMATION**

Polish **EXCELLENT**  
Symmetry **EXCELLENT**  
Fluorescence **SLIGHT**  
Inscription(s) **IGI LG739545222**

Comments: This Laboratory Grown Diamond was created by Chemical Vapor Deposition (CVD) growth process.  
Indications of post-growth treatment.

**PROPORTIONS**



Sample Image Used

**COLOR**

D E F G H I J Faint Very Light Light

**CLARITY**

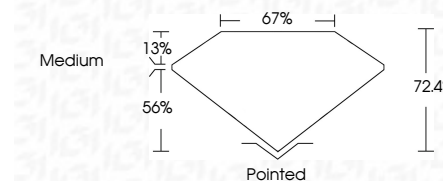
FL	IF	VS <sup>1-2</sup>	VS <sup>1-2</sup>	SI <sup>1-2</sup>	I <sup>1-3</sup>
Flawless	Internally Flawless	Very Very Slightly Included	Very Slightly Included	Slightly Included	Included



October 10, 2025  
IGI Report Number **LG739545222**  
Description **LABORATORY GROWN DIAMOND**  
Shape and Cutting Style **PRINCESS CUT**  
Measurements **6.68 X 6.56 X 4.75 MM**  
**GRADING RESULTS**  
Carat Weight **1.89 CARAT**  
Color Grade **FANCY PINK BROWN**  
Clarity Grade **VVS 2**

**ADDITIONAL GRADING INFORMATION**

Polish **EXCELLENT**  
Symmetry **EXCELLENT**  
Fluorescence **SLIGHT**  
Inscription(s) **IGI LG739545222**  
Comments: This Laboratory Grown Diamond was created by Chemical Vapor Deposition (CVD) growth process.  
Indications of post-growth treatment.



October 10, 2025  
IGI Report No LG739545222  
PRINCESS CUT

1.89 CARAT  
FANCY PINK BROWN  
VVS 2  
6.68 X 6.56 X 4.75 MM  
72.4%  
67%  
Medium

Polished  
EXCELLENT  
EXCELLENT  
SLIGHT  
IGI LG739545222

Comments: This Laboratory Grown Diamond was created by Chemical Vapor Deposition (CVD) growth process.  
Indications of post-growth treatment.