



October 3, 2025

IGI Report Number **LG739545911**

**ROUND BRILLIANT**

**LABORATORY GROWN DIAMOND**

**3.69 - 3.71 X 2.21 MM**

|                |                        |
|----------------|------------------------|
| Carat Weight   | <b>0.19 CARAT</b>      |
| Color Grade    | <b>D</b>               |
| Clarity Grade  | <b>VVS 2</b>           |
| Cut Grade      | <b>VERY GOOD</b>       |
| Polish         | <b>VERY GOOD</b>       |
| Symmetry       | <b>VERY GOOD</b>       |
| Fluorescence   | <b>NONE</b>            |
| Inscription(s) | <b>IGI LG739545911</b> |

Comments: This Laboratory Grown Diamond was created by Chemical Vapor Deposition (CVD) growth process. Type IIa

**LABORATORY GROWN DIAMOND REPORT**

October 3, 2025

IGI Report Number

**LG739545911**

Description

**LABORATORY GROWN DIAMOND**

Shape and Cutting Style

**ROUND BRILLIANT**

Measurements

**3.69 - 3.71 X 2.21 MM**

**GRADING RESULTS**

Carat Weight

**0.19 CARAT**

Color Grade

**D**

Clarity Grade

**VVS 2**

Cut Grade

**VERY GOOD**

**ADDITIONAL GRADING INFORMATION**

Polish

**VERY GOOD**

Symmetry

**VERY GOOD**

Fluorescence

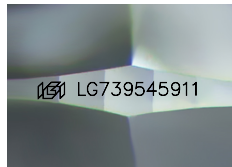
**NONE**

Inscription(s)

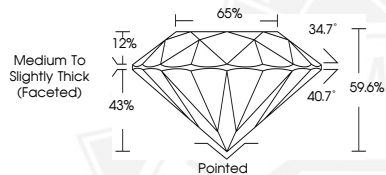
**IGI LG739545911**

Comments: This Laboratory Grown Diamond was created by Chemical Vapor Deposition (CVD) growth process.

Type IIa



Sample Image Used



October 3, 2025

IGI Report Number **LG739545911**

**ROUND BRILLIANT**

**LABORATORY GROWN DIAMOND**

**3.69 - 3.71 X 2.21 MM**

|                |                        |
|----------------|------------------------|
| Carat Weight   | <b>0.19 CARAT</b>      |
| Color Grade    | <b>D</b>               |
| Clarity Grade  | <b>VVS 2</b>           |
| Cut Grade      | <b>VERY GOOD</b>       |
| Polish         | <b>VERY GOOD</b>       |
| Symmetry       | <b>VERY GOOD</b>       |
| Fluorescence   | <b>NONE</b>            |
| Inscription(s) | <b>IGI LG739545911</b> |

Comments: This Laboratory Grown Diamond was created by Chemical Vapor Deposition (CVD) growth process. Type IIa



THIS DOCUMENT WAS PRODUCED WITH THE FOLLOWING SECURITY MEASURES: SPECIAL DOCUMENT PAPER, INK SCREENS, WATERMARK, BACKGROUND DESIGNS, HOLOGRAM AND OTHER SECURITY FEATURES NOT LISTED AND DO EXCEED DOCUMENT SECURITY INDUSTRY GUIDELINES.