



ELECTRONIC COPY

LG739549651
Report verification at igi.org



November 3, 2025
IGI Report Number LG739549651
Description LABORATORY GROWN DIAMOND
Shape and Cutting Style RECTANGULAR CUSHION MIXED CUT
Measurements 17.55 X 10.19 X 6.42 MM
GRADING RESULTS
Carat Weight 11.57 CARATS
Color Grade FANCY INTENSE PINK
Clarity Grade VS 2

LABORATORY GROWN DIAMOND REPORT

November 3, 2025
IGI Report Number LG739549651
Description LABORATORY GROWN DIAMOND
Shape and Cutting Style RECTANGULAR CUSHION MIXED CUT
Measurements 17.55 X 10.19 X 6.42 MM

GRADING RESULTS

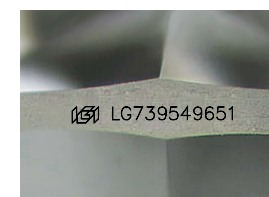
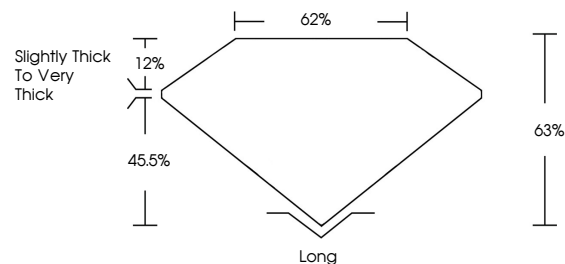
Carat Weight 11.57 CARATS
Color Grade FANCY INTENSE PINK
Clarity Grade VS 2

ADDITIONAL GRADING INFORMATION

Polish EXCELLENT
Symmetry EXCELLENT
Fluorescence STRONG
Inscription(s) LG739549651

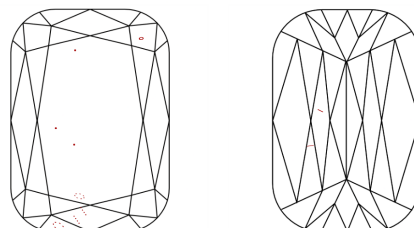
Comments: This Laboratory Grown Diamond was created by Chemical Vapor Deposition (CVD) growth process.
Indications of post-growth treatment.

PROPORTIONS



Sample Image Used

CLARITY CHARACTERISTICS



KEY TO SYMBOLS

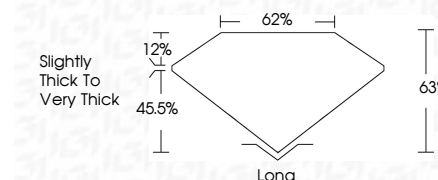
Red symbols indicate internal characteristics.
Green symbols indicate external characteristics.

COLOR

D E F G H I J Faint Very Light Light

CLARITY

FL IF VS 1-2 VS 1-2 SI 1-2 I 1-3
Flawless Internally Flawless Very Very Slightly Included Very Slightly Included Slightly Included Included



ADDITIONAL GRADING INFORMATION

Polish EXCELLENT
Symmetry EXCELLENT
Fluorescence STRONG
Inscription(s) LG739549651
Comments: This Laboratory Grown Diamond was created by Chemical Vapor Deposition (CVD) growth process.
Indications of post-growth treatment.



November 3, 2025
IGI Report No LG739549651
RECTANGULAR CUSHION MIXED CUT
11.57 CARATS
FANCY INTENSE PINK
VS 2
63%
62%
Slightly Thick To Very Thick
Long
EXCELLENT
EXCELLENT
STRONG
LG739549651
Comments: This Laboratory Grown Diamond was created by Chemical Vapor Deposition (CVD) growth process.
Indications of post-growth treatment.