



**LABORATORY GROWN DIAMOND REPORT**

November 29, 2025  
 IGI Report Number **LG739561044**  
 Description **LABORATORY GROWN DIAMOND**  
 Shape and Cutting Style **PEAR BRILLIANT**  
 Measurements **5.06 X 3.56 X 2.38 MM**

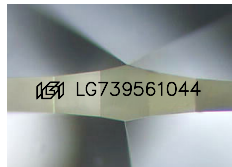
**GRADING RESULTS**

Carat Weight **0.25 CARAT**  
 Color Grade **F**  
 Clarity Grade **SI 1**

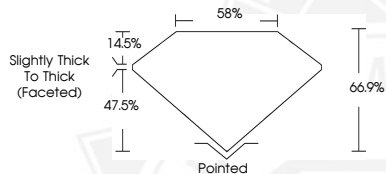
**ADDITIONAL GRADING INFORMATION**

Polish **VERY GOOD**  
 Symmetry **VERY GOOD**  
 Fluorescence **NONE**  
 Inscription(s) **IGI LG739561044**

Comments: As Grown - No indication of post-growth treatment. This Laboratory Grown Diamond was created by High Pressure High Temperature (HPHT) growth process. Type II



Sample Image Used



November 29, 2025  
 IGI Report Number **LG739561044**  
**PEAR BRILLIANT**  
**LABORATORY GROWN DIAMOND**  
**5.06 X 3.56 X 2.38 MM**  
 Carat Weight **0.25 CARAT**  
 Color Grade **F**  
 Clarity Grade **SI 1**  
 Polish **VERY GOOD**  
 Symmetry **VERY GOOD**  
 Fluorescence **NONE**  
 Inscription(s) **IGI LG739561044**

Comments: As Grown - No indication of post-growth treatment. This Laboratory Grown Diamond was created by High Pressure High Temperature (HPHT) growth process. Type II



November 29, 2025  
 IGI Report Number **LG739561044**  
**PEAR BRILLIANT**  
**LABORATORY GROWN DIAMOND**  
**5.06 X 3.56 X 2.38 MM**  
 Carat Weight **0.25 CARAT**  
 Color Grade **F**  
 Clarity Grade **SI 1**  
 Polish **VERY GOOD**  
 Symmetry **VERY GOOD**  
 Fluorescence **NONE**  
 Inscription(s) **IGI LG739561044**

Comments: As Grown - No indication of post-growth treatment. This Laboratory Grown Diamond was created by High Pressure High Temperature (HPHT) growth process. Type II



THIS DOCUMENT WAS PRODUCED WITH THE FOLLOWING SECURITY MEASURES: SPECIAL DOCUMENT PAPER, INK SCREENS, WATERMARK, BACKGROUND DESIGNS, HOLOGRAM AND OTHER SECURITY FEATURES NOT LISTED AND DO EXCEED DOCUMENT SECURITY INDUSTRY GUIDELINES.