

ELECTRONIC COPY

LABORATORY GROWN DIAMOND REPORT

| | |
|-------------------------|--|
| November 11, 2025 | |
| IGI Report Number | LG739580214 |
| Description | LABORATORY GROWN DIAMOND |
| Shape and Cutting Style | CUT CORNERED RECTANGULAR MODIFIED BRILLIANT |
| Measurements | 8.70 X 6.19 X 4.46 MM |

GRADING RESULTS

| | |
|---------------|-------------|
| Carat Weight | 2.08 CARATS |
| Color Grade | E |
| Clarity Grade | VS 1 |

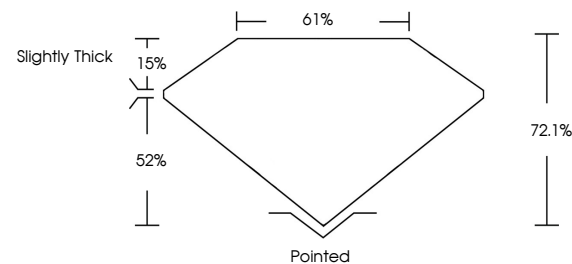
ADDITIONAL GRADING INFORMATION

| | |
|----------------|---|
| Polish | EXCELLENT |
| Symmetry | EXCELLENT |
| Fluorescence | NONE |
| Inscription(s) |  LG739580214 |

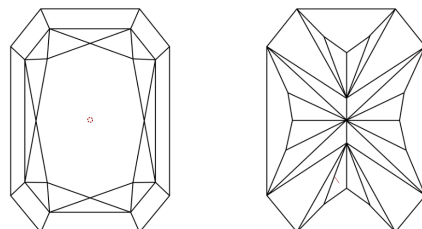
Comments: As Grown - No indication of post-growth treatment.
This Laboratory Grown Diamond was created by High Pressure High Temperature (HPHT) growth process.
Type II

LG739580214
Report verification at igi.org

PROPORTIONS

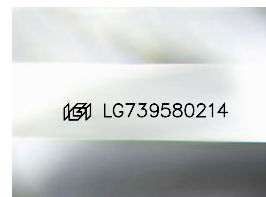


CLARITY CHARACTERISTICS



KEY TO SYMBOLS

Red symbols indicate internal characteristics.
Green symbols indicate external characteristics.



Sample Image Used

COLOR

D E F G H I J Faint Very Light Light

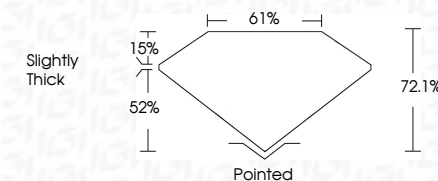
CLARITY

| FL | IF | VVS ¹⁻² | VS ¹⁻² | SI ¹⁻² | I ¹⁻³ |
|----------|---------------------|-----------------------------|------------------------|-------------------|------------------|
| Flawless | Internally Flawless | Very Very Slightly Included | Very Slightly Included | Slightly Included | Included |

LABORATORY GROWN DIAMOND REPORT



| | |
|-------------------------|---|
| November 11, 2025 | |
| IGI Report Number | LG739580214 |
| Description | LABORATORY GROWN DIAMOND |
| Shape and Cutting Style | CUT CORNERED RECTANGULAR MODIFIED BRILLIANT |
| Measurements | 8.70 X 6.19 X 4.46 MM |
| GRADING RESULTS | |
| Carat Weight | 2.08 CARATS |
| Color Grade | E |
| Clarity Grade | VS 1 |



ADDITIONAL GRADING INFORMATION

| | |
|--|----------------------------|
| Polish | EXCELLENT |
| Symmetry | EXCELLENT |
| Fluorescence | NONE |
| Inscription(s) | (G) LG739580214 |
| <p>Comments: As Grown - No indication of post-growth treatment.</p> <p>This Laboratory Grown Diamond was created by High Pressure High Temperature (HPHT) growth process.</p> <p>Type II</p> | |



© IGI 2020, International Gemological Institute

FD - 10 20

| | |
|---------------------------------------|---------------------------------------|
| November 11, 2025 | November 11, 2025 |
| GI REPORT NO. LG795982014 | GI REPORT NO. LG795982014 |
| CUT CORNERED RECT. MODIFIED BRILLIANT | CUT CORNERED RECT. MODIFIED BRILLIANT |
| 2.08 CARATS | 2.08 CARATS |
| E | E |
| | VS 1 |
| | 72.1% |
| | 61% |
| | Slightly Thick |
| | |
| | Polished |
| | EXCELLENT |
| | EXCELLENT |
| | NONE |
| | 1691 LG795982014 |

Comments:

As Grown - No indication of post-growth treatment

This Laboratory Grown Diamond was created by High Pressure High Temperature (HPHT) growth process.