



ELECTRONIC COPY

LG739582014
Report verification at igi.org



October 11, 2025

IGI Report Number **LG739582014**

Description **LABORATORY GROWN DIAMOND**

Shape and Cutting Style **PEAR BRILLIANT**

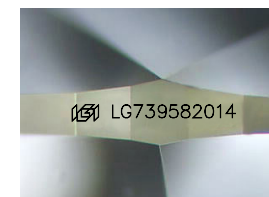
Measurements **10.11 X 6.46 X 4.07 MM**

GRADING RESULTS

Carat Weight **1.57 CARAT**

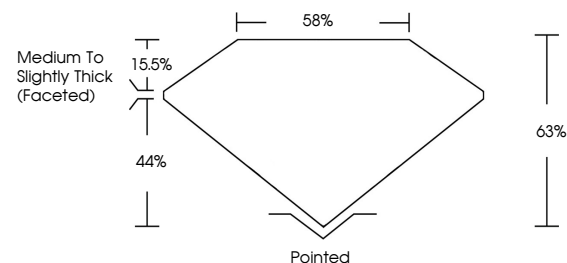
Color Grade **E**

Clarity Grade **VVS 2**

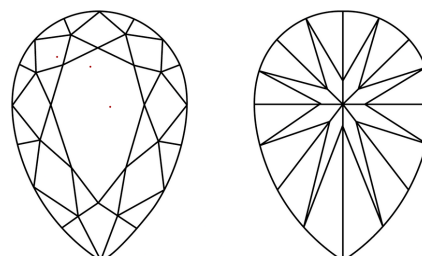


Sample Image Used

PROPORTIONS



CLARITY CHARACTERISTICS



KEY TO SYMBOLS

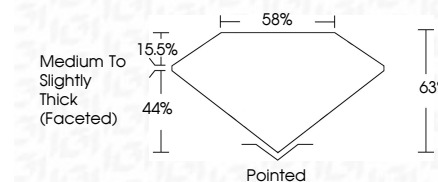
Red symbols indicate internal characteristics.
Green symbols indicate external characteristics.

COLOR

D E F G H I J Faint Very Light Light

CLARITY

FL	IF	VS ¹⁻²	VS ¹⁻²	SI ¹⁻²	I ¹⁻³
Flawless	Internally Flawless	Very Very Slightly Included	Very Slightly Included	Slightly Included	Included



ADDITIONAL GRADING INFORMATION

Polish **EXCELLENT**

Symmetry **EXCELLENT**

Fluorescence **NONE**

Inscription(s) **IGI LG739582014**

Comments: This Laboratory Grown Diamond was created by Chemical Vapor Deposition (CVD) growth process. Type IIa



IGI



October 11, 2025	1.57 CARAT	E	63%	58%	Pointed	EXCELLENT	NONE	IGI LG739582014
IGI Report No LG739582014	1.57 CARAT	E	VVS 2	58%	Pointed	EXCELLENT	NONE	IGI LG739582014
PEAR BRILLIANT	1.57 CARAT	E	VVS 2	58%	Pointed	EXCELLENT	NONE	IGI LG739582014
10.11 X 6.46 X 4.07 MM	1.57 CARAT	E	VVS 2	58%	Pointed	EXCELLENT	NONE	IGI LG739582014
Color Grade	1.57 CARAT	E	VVS 2	58%	Pointed	EXCELLENT	NONE	IGI LG739582014
Clarity Grade	1.57 CARAT	E	VVS 2	58%	Pointed	EXCELLENT	NONE	IGI LG739582014
Depth	1.57 CARAT	E	VVS 2	58%	Pointed	EXCELLENT	NONE	IGI LG739582014
Table	1.57 CARAT	E	VVS 2	58%	Pointed	EXCELLENT	NONE	IGI LG739582014
Girdle	1.57 CARAT	E	VVS 2	58%	Pointed	EXCELLENT	NONE	IGI LG739582014
Culet	1.57 CARAT	E	VVS 2	58%	Pointed	EXCELLENT	NONE	IGI LG739582014
Polish	1.57 CARAT	E	VVS 2	58%	Pointed	EXCELLENT	NONE	IGI LG739582014
Symmetry	1.57 CARAT	E	VVS 2	58%	Pointed	EXCELLENT	NONE	IGI LG739582014
Fluorescence	1.57 CARAT	E	VVS 2	58%	Pointed	EXCELLENT	NONE	IGI LG739582014
Inscription(s)	1.57 CARAT	E	VVS 2	58%	Pointed	EXCELLENT	NONE	IGI LG739582014

Comments: This Laboratory Grown Diamond was created by Chemical Vapor Deposition (CVD) growth process. Type IIa