



**ELECTRONIC COPY**

LG739594463  
Report verification at igi.org



October 4, 2025

IGI Report Number **LG739594463**

Description **LABORATORY GROWN DIAMOND**

Shape and Cutting Style **ROUND BRILLIANT**

Measurements **9.35 - 9.40 X 5.70 MM**

**GRADING RESULTS**

Carat Weight **3.07 CARATS**

Color Grade **E**

Clarity Grade **VVS 2**

Cut Grade **IDEAL**

October 4, 2025  
IGI Report Number **LG739594463**  
Description **LABORATORY GROWN DIAMOND**  
Shape and Cutting Style **ROUND BRILLIANT**  
Measurements **9.35 - 9.40 X 5.70 MM**

**GRADING RESULTS**

Carat Weight **3.07 CARATS**

Color Grade **E**

Clarity Grade **VVS 2**

Cut Grade **IDEAL**

**ADDITIONAL GRADING INFORMATION**

Polish **EXCELLENT**

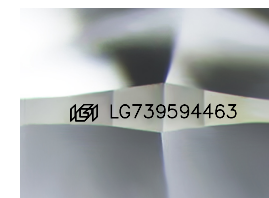
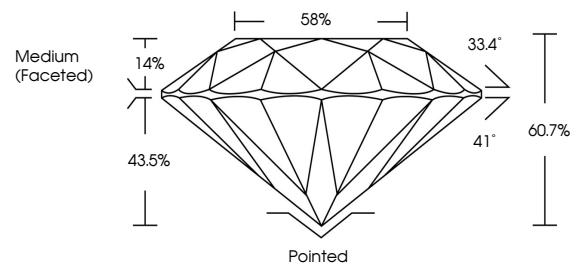
Symmetry **EXCELLENT**

Fluorescence **NONE**

Inscription(s) **LG739594463**

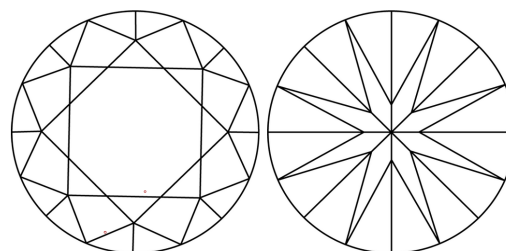
Comments: This Laboratory Grown Diamond was created by Chemical Vapor Deposition (CVD) growth process.  
Type IIa

**PROPORTIONS**



Sample Image Used

**CLARITY CHARACTERISTICS**



**KEY TO SYMBOLS**

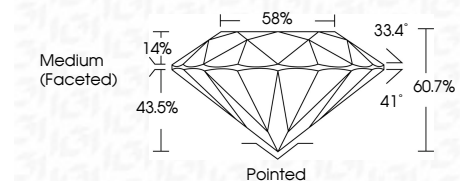
Red symbols indicate internal characteristics.  
Green symbols indicate external characteristics.

**COLOR**

D E F G H I J Faint Very Light Light

**CLARITY**

FL	IF	VVS <sup>1-2</sup>	VS <sup>1-2</sup>	SI <sup>1-2</sup>	I <sup>1-3</sup>
Flawless	Internally Flawless	Very Very Slightly Included	Very Slightly Included	Slightly Included	Included



**ADDITIONAL GRADING INFORMATION**

Polish **EXCELLENT**

Symmetry **EXCELLENT**

Fluorescence **NONE**

Inscription(s) **LG739594463**

Comments: This Laboratory Grown Diamond was created by Chemical Vapor Deposition (CVD) growth process.  
Type IIa



**IGI**



October 4, 2025	IGI Report No LG739594463	3.07 CARATS	E	Pointed	EXCELLENT	EXCELLENT	NONE	LG739594463
ROUND BRILLIANT	9.35 - 9.40 X 5.70 MM	Color Grade	VVS 2	Medium (Faceted)	IDEAL	60.7%	58%	None
		Clarity Grade	IDEAL					
		Depth	60.7%					
		Table	58%					
		Grade						
		Culet						
		Polish	EXCELLENT					
		Symmetry	EXCELLENT					
		Fluorescence	NONE					
		Inscription(s)						

Comments: This Laboratory Grown Diamond was created by Chemical Vapor Deposition (CVD) growth process.  
Type IIa