



ELECTRONIC COPY

LG741539439
Report verification at igi.org



October 12, 2025

IGI Report Number **LG741539439**

Description **LABORATORY GROWN DIAMOND**

Shape and Cutting Style **EMERALD CUT**

Measurements **10.45 X 6.58 X 4.50 MM**

GRADING RESULTS

Carat Weight **3.02 CARATS**

Color Grade **FANCY INTENSE PINK**

Clarity Grade **VVS 2**

LABORATORY GROWN DIAMOND REPORT

October 12, 2025

IGI Report Number **LG741539439**

Description **LABORATORY GROWN DIAMOND**

Shape and Cutting Style **EMERALD CUT**

Measurements **10.45 X 6.58 X 4.50 MM**

GRADING RESULTS

Carat Weight **3.02 CARATS**

Color Grade **FANCY INTENSE PINK**

Clarity Grade **VVS 2**

ADDITIONAL GRADING INFORMATION

Polish **EXCELLENT**

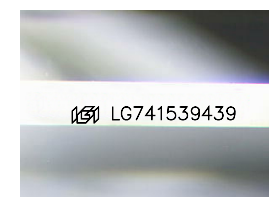
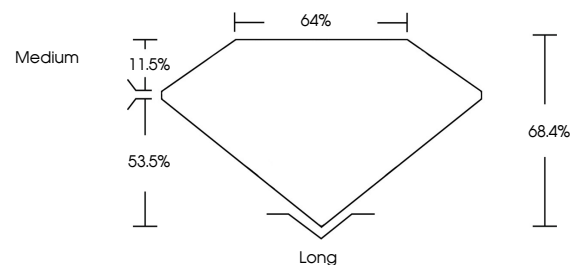
Symmetry **EXCELLENT**

Fluorescence **STRONG**

Inscription(s) **LG741539439**

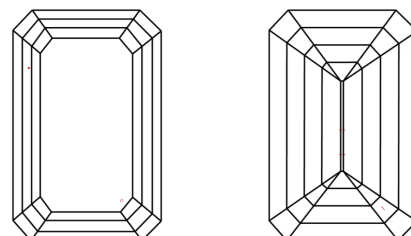
Comments: This Laboratory Grown Diamond was created by Chemical Vapor Deposition (CVD) growth process. Indications of post-growth treatment.

PROPORTIONS



Sample Image Used

CLARITY CHARACTERISTICS



KEY TO SYMBOLS

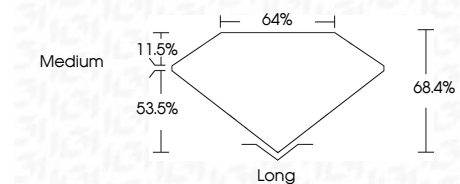
Red symbols indicate internal characteristics.
Green symbols indicate external characteristics.

COLOR

D E F G H I J Faint Very Light Light

CLARITY

FL	IF	VVS ¹⁻²	VS ¹⁻²	SI ¹⁻²	I ¹⁻³
Flawless	Internally Flawless	Very Very Slightly Included	Very Slightly Included	Slightly Included	Included



ADDITIONAL GRADING INFORMATION

Polish **EXCELLENT**

Symmetry **EXCELLENT**

Fluorescence **STRONG**

Inscription(s) **LG741539439**

Comments: This Laboratory Grown Diamond was created by Chemical Vapor Deposition (CVD) growth process. Indications of post-growth treatment.



October 12, 2025
IGI Report No **LG741539439**
EMERALD CUT

3.02 CARATS
Carat Weight
FANCY INTENSE PINK
Color Grade

VVS 2
Clarity Grade
68.4%
Table
64%
Depth
Medium
Grades

Long
Culet
EXCELLENT
Polish
EXCELLENT
Symmetry
STRONG
Fluorescence
Inscription(s)
 LG741539439

Comments: This Laboratory Grown Diamond was created by Chemical Vapor Deposition (CVD) growth process. Indications of post-growth treatment.