

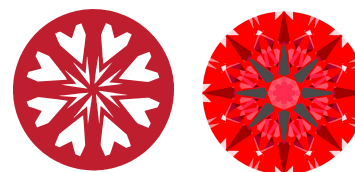


**INTERNATIONAL  
GEMOLOGICAL  
INSTITUTE**

LG741561515  
Report verification at igi.org

**LIGHT PERFORMANCE REPORT**

**Light Performance Grade: Exceptional**



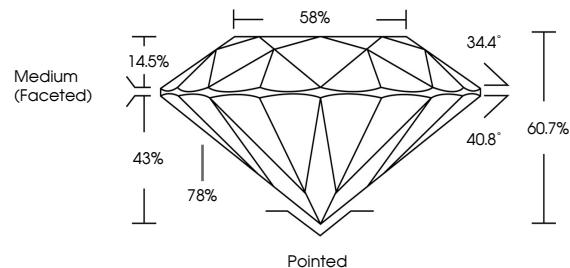
**Structured Light Environment Representation**



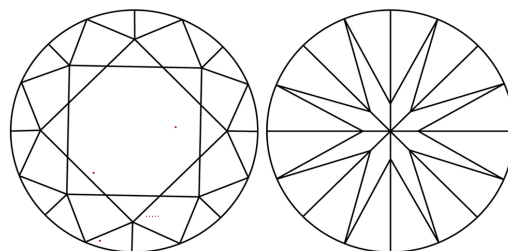
**CLARITY**

| FL       | IF                  | VS <sup>1-2</sup>           | VS <sup>1-2</sup>      | SI <sup>1-2</sup> | I <sup>1-3</sup> |
|----------|---------------------|-----------------------------|------------------------|-------------------|------------------|
| Flawless | Internally Flawless | Very Very Slightly Included | Very Slightly Included | Slightly Included | Included         |

**PROPORTIONS**

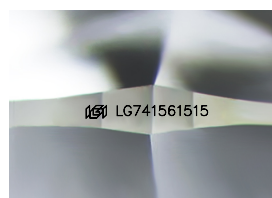


**CLARITY CHARACTERISTICS**



**KEY TO SYMBOLS**

Red symbols indicate internal characteristics.  
Green symbols indicate external characteristics.



Sample Image Used

[www.igi.org](http://www.igi.org)

**ELECTRONIC COPY**

**LABORATORY GROWN DIAMOND REPORT**

October 16, 2025  
IGI Report Number **LG741561515**  
Description **LABORATORY GROWN DIAMOND**  
Shape and Cutting Style **ROUND BRILLIANT**  
Measurements **9.62 - 9.70 x 5.86 mm**

**GRADING RESULTS**

Carat Weight **3.32 CARATS**  
Color Grade **E**  
Clarity Grade **VVS 2**  
Cut Grade **IDEAL**

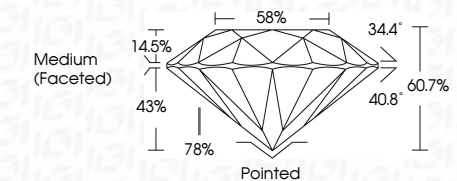
**ADDITIONAL GRADING INFORMATION**

Polish **EXCELLENT**  
Symmetry **EXCELLENT**  
Fluorescence **NONE**  
Inscription(s) **IGI LG741561515**

Comments: HEARTS & ARROWS  
This Laboratory Grown Diamond was created by Chemical Vapor Deposition (CVD) growth process. Type IIa



October 16, 2025  
IGI Report Number **LG741561515**  
Description **LABORATORY GROWN DIAMOND**  
Shape and Cutting Style **ROUND BRILLIANT**  
Measurements **9.62 - 9.70 X 5.86 MM**  
**GRADING RESULTS**  
Carat Weight **3.32 CARATS**  
Color Grade **E**  
Clarity Grade **VVS 2**  
Cut Grade **IDEAL**



**ADDITIONAL GRADING INFORMATION**

Polish **EXCELLENT**  
Symmetry **EXCELLENT**  
Fluorescence **NONE**  
Inscription(s) **IGI LG741561515**  
Comments: HEARTS & ARROWS  
This Laboratory Grown Diamond was created by Chemical Vapor Deposition (CVD) growth process. Type IIa



**IGI**

|                  |                           |                  |       |                 |
|------------------|---------------------------|------------------|-------|-----------------|
| October 16, 2025 | IGI Report No LG741561515 | 3.32 CARATS      | E     | Pointed         |
| ROUND BRILLIANT  | 9.62 - 9.70 X 5.86 MM     | IDEAL            | VVS 2 | EXCELLENT       |
| Color Grade      | Cut Grade                 | 60.7%            | 58%   | EXCELLENT       |
| Clarity Grade    | Table                     | Medium (Faceted) |       | NONE            |
| Depth            | Grade                     |                  |       | IGI LG741561515 |
| Polish           |                           |                  |       |                 |
| Symmetry         |                           |                  |       |                 |
| Fluorescence     |                           |                  |       |                 |
| Inscription(s)   |                           |                  |       |                 |

Comments: HEARTS & ARROWS  
This Laboratory Grown Diamond was created by Chemical Vapor Deposition (CVD) growth process. Type IIa

