



**INTERNATIONAL
GEMOLOGICAL
INSTITUTE**

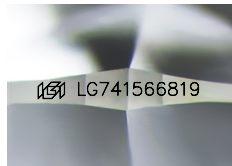
ELECTRONIC COPY



October 10, 2025
IGI Report Number LG741566819
ROUND BRILLIANT
LABORATORY GROWN DIAMOND
5.02 - 5.03 X 2.98 MM
 Carat Weight **0.46 CARAT**
 Color Grade **D**
 Clarity Grade **I.F.**
 Cut Grade **EXCELLENT**
 Polish **EXCELLENT**
 Symmetry **EXCELLENT**
 Fluorescence **NONE**
 Inscription(s) **IGI LG741566819**

LABORATORY GROWN DIAMOND REPORT

October 10, 2025
 IGI Report Number **LG741566819**
 Description **LABORATORY GROWN DIAMOND**
 Shape and Cutting Style **ROUND BRILLIANT**
 Measurements **5.02 - 5.03 X 2.98 MM**



Sample Image Used

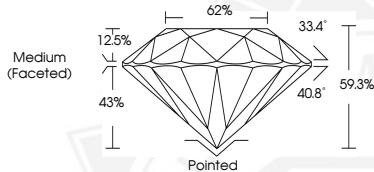
GRADING RESULTS

Carat Weight **0.46 CARAT**
 Color Grade **D**
 Clarity Grade **INTERNALLY FLAWLESS**
 Cut Grade **EXCELLENT**

ADDITIONAL GRADING INFORMATION

Polish **EXCELLENT**
 Symmetry **EXCELLENT**
 Fluorescence **NONE**
 Inscription(s) **IGI LG741566819**

Comments: This Laboratory Grown Diamond was created by Chemical Vapor Deposition (CVD) growth process. Type IIa



October 10, 2025
IGI Report Number LG741566819
ROUND BRILLIANT
LABORATORY GROWN DIAMOND
5.02 - 5.03 X 2.98 MM
 Carat Weight **0.46 CARAT**
 Color Grade **D**
 Clarity Grade **I.F.**
 Cut Grade **EXCELLENT**
 Polish **EXCELLENT**
 Symmetry **EXCELLENT**
 Fluorescence **NONE**
 Inscription(s) **IGI LG741566819**

Comments: This Laboratory Grown Diamond was created by Chemical Vapor Deposition (CVD) growth process. Type IIa



THIS DOCUMENT WAS PRODUCED WITH THE FOLLOWING SECURITY MEASURES: SPECIAL DOCUMENT PAPER, INK SCREENS, WATERMARK, BACKGROUND DESIGNS, HOLOGRAM AND OTHER SECURITY FEATURES NOT LISTED AND DO EXCEED DOCUMENT SECURITY INDUSTRY GUIDELINES.

For terms & conditions and to verify this report, please visit www.igi.org