



ELECTRONIC COPY

LG741576827
Report verification at igi.org



October 10, 2025

IGI Report Number **LG741576827**

Description **LABORATORY GROWN DIAMOND**

Shape and Cutting Style **ROUND BRILLIANT**

Measurements **11.68 - 11.72 X 6.94 MM**

GRADING RESULTS

Carat Weight **6.01 CARATS**

Color Grade **F**

Clarity Grade **VS 1**

Cut Grade **VERY GOOD**

October 10, 2025

IGI Report Number **LG741576827**

Description **LABORATORY GROWN DIAMOND**

Shape and Cutting Style **ROUND BRILLIANT**

Measurements **11.68 - 11.72 X 6.94 MM**

GRADING RESULTS

Carat Weight **6.01 CARATS**

Color Grade **F**

Clarity Grade **VS 1**

Cut Grade **VERY GOOD**

ADDITIONAL GRADING INFORMATION

Polish **EXCELLENT**

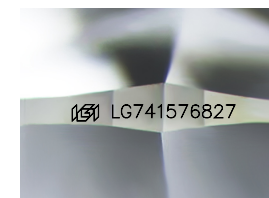
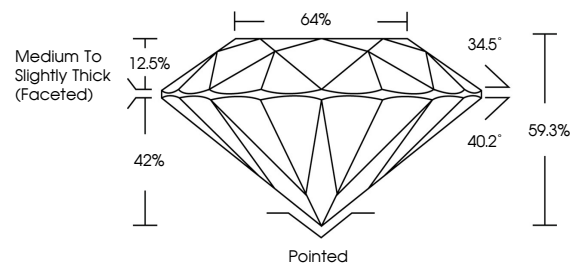
Symmetry **EXCELLENT**

Fluorescence **NONE**

Inscription(s) **IGI LG741576827**

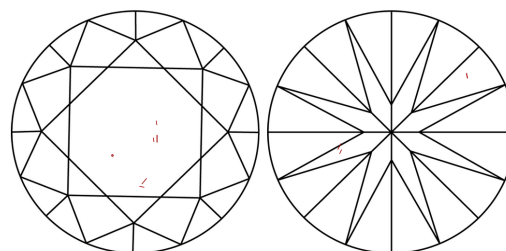
Comments: This Laboratory Grown Diamond was created by Chemical Vapor Deposition (CVD) growth process. Type IIa

PROPORTIONS



Sample Image Used

CLARITY CHARACTERISTICS



KEY TO SYMBOLS

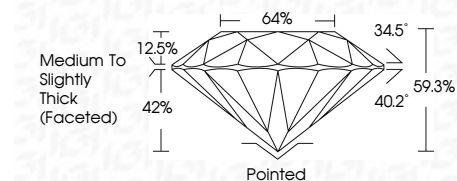
Red symbols indicate internal characteristics.
Green symbols indicate external characteristics.

COLOR

D E F G H I J Faint Very Light Light

CLARITY

FL	IF	VS ¹⁻²	VS ¹⁻²	SI ¹⁻²	I ¹⁻³
Flawless	Internally Flawless	Very Very Slightly Included	Very Slightly Included	Slightly Included	Included



ADDITIONAL GRADING INFORMATION

Polish **EXCELLENT**

Symmetry **EXCELLENT**

Fluorescence **NONE**

Inscription(s) **IGI LG741576827**

Comments: This Laboratory Grown Diamond was created by Chemical Vapor Deposition (CVD) growth process. Type IIa



IGI



October 10, 2025
IGI Report No LG741576827
ROUND BRILLIANT

11.68 - 11.72 X 6.94 MM

6.01 CARATS
F

Color Grade
VERY GOOD

Clarity Grade
VS 1

Depth
59.3%

Table
64%

Girdle
Medium To Slightly Thick (Faceted)

Culet
Pointed

Polish
EXCELLENT

Symmetry
EXCELLENT

Fluorescence
NONE

Inscription(s)
IGI LG741576827

Comments: This Laboratory Grown Diamond was created by Chemical Vapor Deposition (CVD) growth process. Type IIa