



ELECTRONIC COPY

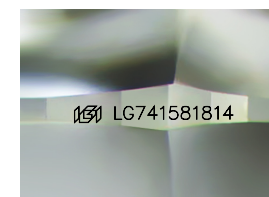
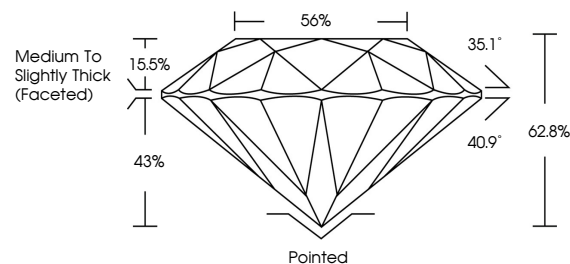
LG741581814
Report verification at igi.org



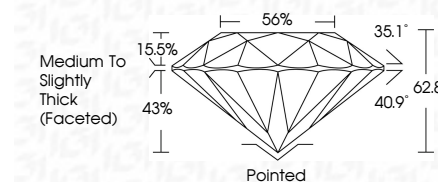
December 26, 2025
IGI Report Number **LG741581814**
Description **LABORATORY GROWN DIAMOND**
Shape and Cutting Style **ROUND BRILLIANT**
Measurements **9.00 - 9.03 X 5.66 MM**
GRADING RESULTS
Carat Weight **2.85 CARATS**
Color Grade **E**
Clarity Grade **SI 1**
Cut Grade **EXCELLENT**

December 26, 2025
IGI Report Number **LG741581814**
Description **LABORATORY GROWN DIAMOND**
Shape and Cutting Style **ROUND BRILLIANT**
Measurements **9.00 - 9.03 X 5.66 MM**
GRADING RESULTS
Carat Weight **2.85 CARATS**
Color Grade **E**
Clarity Grade **SI 1**
Cut Grade **EXCELLENT**

PROPORTIONS



Sample Image Used



ADDITIONAL GRADING INFORMATION
Polish **EXCELLENT**
Symmetry **EXCELLENT**
Fluorescence **NONE**
Inscription(s) **IGI LG741581814**

Comments: This Laboratory Grown Diamond was created by Chemical Vapor Deposition (CVD) growth process. Type IIa

COLOR

D E F G H I J Faint Very Light Light

CLARITY

FL	IF	VS ¹⁻²	VS ¹⁻²	SI ¹⁻²	I ¹⁻³
Flawless	Internally Flawless	Very Very Slightly Included	Very Slightly Included	Slightly Included	Included

ADDITIONAL GRADING INFORMATION

Polish **EXCELLENT**
Symmetry **EXCELLENT**
Fluorescence **NONE**
Inscription(s) **IGI LG741581814**
Comments: This Laboratory Grown Diamond was created by Chemical Vapor Deposition (CVD) growth process. Type IIa



IGI



December 26, 2025
IGI Report No LG741581814
ROUND BRILLIANT
9.00 - 9.03 X 5.66 MM
2.85 CARATS
E
SI 1
EXCELLENT
62.8%
56%
Medium To Slightly Thick (Faceted)
Pointed
EXCELLENT
EXCELLENT
NONE
IGI LG741581814
Comments: This Laboratory Grown Diamond was created by Chemical Vapor Deposition (CVD) growth process. Type IIa