



ELECTRONIC COPY

LG741581869
Report verification at igi.org



December 26, 2025

IGI Report Number **LG741581869**

Description **LABORATORY GROWN DIAMOND**

Shape and Cutting Style **ROUND BRILLIANT**

Measurements **8.27 - 8.32 X 4.90 MM**

GRADING RESULTS

Carat Weight **2.04 CARATS**

Color Grade **H**

Clarity Grade **VVS 1**

Cut Grade **IDEAL**

December 26, 2025

IGI Report Number **LG741581869**

Description **LABORATORY GROWN DIAMOND**

Shape and Cutting Style **ROUND BRILLIANT**

Measurements **8.27 - 8.32 X 4.90 MM**

GRADING RESULTS

Carat Weight **2.04 CARATS**

Color Grade **H**

Clarity Grade **VVS 1**

Cut Grade **IDEAL**

ADDITIONAL GRADING INFORMATION

Polish **VERY GOOD**

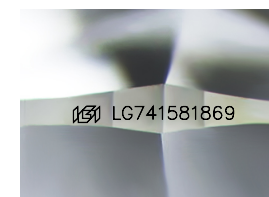
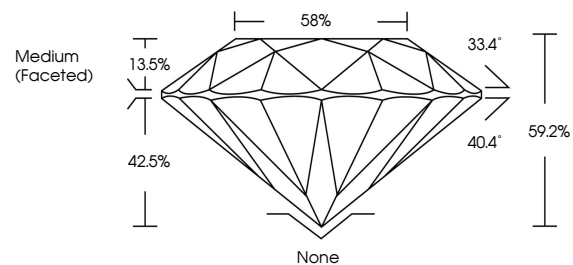
Symmetry **EXCELLENT**

Fluorescence **NONE**

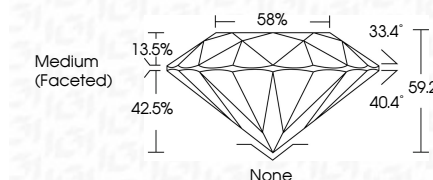
Inscription(s) **LG741581869**

Comments: This Laboratory Grown Diamond was created by Chemical Vapor Deposition (CVD) growth process. Type IIa

PROPORTIONS



Sample Image Used



COLOR

D E F G H I J Faint Very Light Light

CLARITY

FL	IF	VVS ¹⁻²	VS ¹⁻²	SI ¹⁻²	I ¹⁻³
Flawless	Internally Flawless	Very Very Slightly Included	Very Slightly Included	Slightly Included	Included

ADDITIONAL GRADING INFORMATION

Polish **VERY GOOD**

Symmetry **EXCELLENT**

Fluorescence **NONE**

Inscription(s) **LG741581869**

Comments: This Laboratory Grown Diamond was created by Chemical Vapor Deposition (CVD) growth process. Type IIa



IGI



December 26, 2025	IGI Report No LG741581869	ROUND BRILLIANT	8.27 - 8.32 X 4.90 MM	2.04 CARATS	H	VVS 1	IDEAL	59.2%	58%	Medium (Faceted)	None	VERY GOOD	EXCELLENT	NONE	LG741581869
Color Grade	Clarity Grade	Depth	Table	Girdle	Culet	Polish	Symmetry	Fluorescence	Inscription(s)	Comments: This Laboratory Grown Diamond was created by Chemical Vapor Deposition (CVD) growth process. Type IIa					