



**ELECTRONIC COPY**

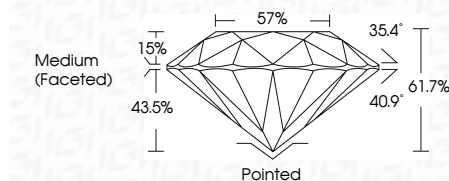
LG741582579  
Report verification at [igi.org](http://igi.org)



January 20, 2026  
IGI Report Number **LG741582579**  
Description **LABORATORY GROWN DIAMOND**  
Shape and Cutting Style **ROUND BRILLIANT**  
Measurements **8.81 - 8.84 X 5.45 MM**

**GRADING RESULTS**

Carat Weight **2.60 CARATS**  
Color Grade **F**  
Clarity Grade **VS 2**  
Cut Grade **IDEAL**

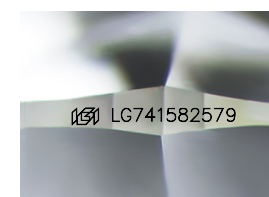


**ADDITIONAL GRADING INFORMATION**

Polish **EXCELLENT**  
Symmetry **EXCELLENT**  
Fluorescence **NONE**  
Inscription(s) **IGI LG741582579**  
Comments: This Laboratory Grown Diamond was created by Chemical Vapor Deposition (CVD) growth process. Type IIa

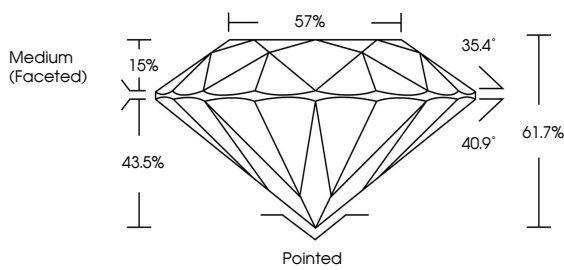


January 20, 2026  
IGI Report No **LG741582579**  
**ROUND BRILLIANT**  
Carat Weight **2.60 CARATS**  
Color Grade **F**  
Clarity Grade **VS 2**  
Depth **IDEAL**  
Table **61.7%**  
Girdle **57%**  
Medium (Faceted)  
Culet **Pointed**  
Polish **EXCELLENT**  
Symmetry **EXCELLENT**  
Fluorescence **NONE**  
Inscription(s) **IGI LG741582579**  
Comments: This Laboratory Grown Diamond was created by Chemical Vapor Deposition (CVD) growth process. Type IIa



Sample Image Used

**PROPORTIONS**



**COLOR**

D E F G H I J Faint Very Light Light

**CLARITY**

FL	IF	VS <sup>1-2</sup>	VS <sup>1-2</sup>	SI <sup>1-2</sup>	I <sup>1-3</sup>
Flawless	Internally Flawless	Very Very Slightly Included	Very Slightly Included	Slightly Included	Included

