



ELECTRONIC COPY

LG741599527
Report verification at igi.org



November 7, 2025
IGI Report Number **LG741599527**
Description **LABORATORY GROWN DIAMOND**
Shape and Cutting Style **RECTANGULAR CUSHION MIXED CUT**
Measurements **16.94 X 9.83 X 6.01 MM**
GRADING RESULTS
Carat Weight **10.14 CARATS**
Color Grade **FANCY INTENSE BLUE**
Clarity Grade **VS 2**

November 7, 2025
IGI Report Number **LG741599527**
Description **LABORATORY GROWN DIAMOND**
Shape and Cutting Style **RECTANGULAR CUSHION MIXED CUT**
Measurements **16.94 X 9.83 X 6.01 MM**

GRADING RESULTS

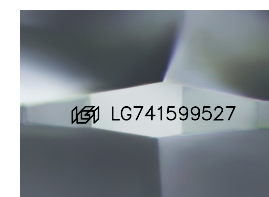
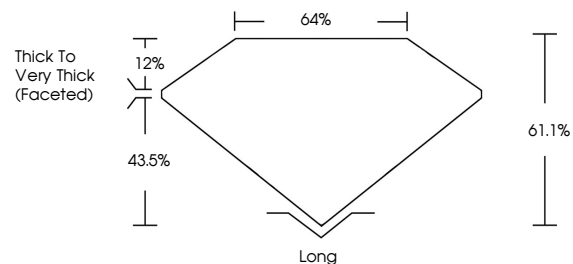
Carat Weight **10.14 CARATS**
Color Grade **FANCY INTENSE BLUE**
Clarity Grade **VS 2**

ADDITIONAL GRADING INFORMATION

Polish **EXCELLENT**
Symmetry **EXCELLENT**
Fluorescence **NONE**
Inscription(s) **IGI LG741599527**

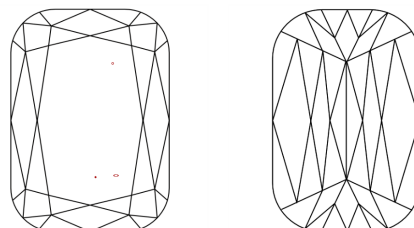
Comments: This Laboratory Grown Diamond was created by Chemical Vapor Deposition (CVD) growth process.
Indications of post-growth treatment.

PROPORTIONS



Sample Image Used

CLARITY CHARACTERISTICS



KEY TO SYMBOLS

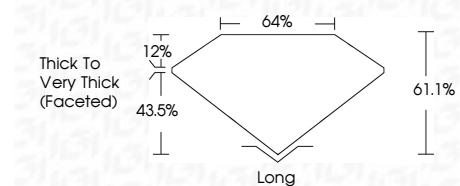
Red symbols indicate internal characteristics.
Green symbols indicate external characteristics.

COLOR

D E F G H I J Faint Very Light Light

CLARITY

FL	IF	VS ¹⁻²	VS ¹⁻²	SI ¹⁻²	I ¹⁻³
Flawless	Internally Flawless	Very Very Slightly Included	Very Slightly Included	Slightly Included	Included



ADDITIONAL GRADING INFORMATION

Polish **EXCELLENT**
Symmetry **EXCELLENT**
Fluorescence **NONE**
Inscription(s) **IGI LG741599527**
Comments: This Laboratory Grown Diamond was created by Chemical Vapor Deposition (CVD) growth process.
Indications of post-growth treatment.



November 7, 2025
IGI Report No LG741599527
RECTANGULAR CUSHION MIXED CUT
10.14 CARATS
FANCY INTENSE BLUE
VS 2
61.1%
43.5%
12%
Thick to Very Thick (Faceted)
Long
EXCELLENT
EXCELLENT
NONE
IGI LG741599527
Comments: This Laboratory Grown Diamond was created by Chemical Vapor Deposition (CVD) growth process.
Indications of post-growth treatment.