



ELECTRONIC COPY

LABORATORY GROWN DIAMOND REPORT

October 13, 2025
IGI Report Number LG742523088
Description LABORATORY GROWN DIAMOND
Shape and Cutting Style CUT CORNERED SQUARE MODIFIED BRILLIANT
Measurements 8.04 X 7.90 X 5.47 MM

GRADING RESULTS

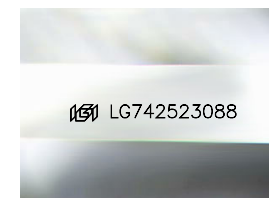
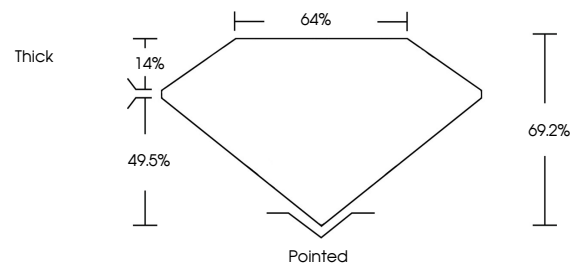
Carat Weight 2.94 CARATS
Color Grade E
Clarity Grade VS 2

ADDITIONAL GRADING INFORMATION

Polish EXCELLENT
Symmetry EXCELLENT
Fluorescence NONE
Inscription(s) IGI LG742523088

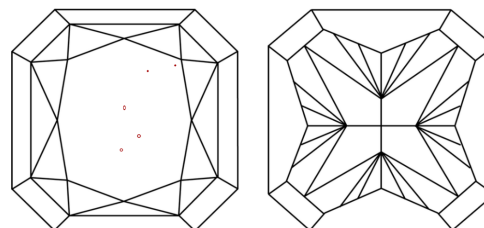
Comments: This Laboratory Grown Diamond was created by Chemical Vapor Deposition (CVD) growth process.
Type IIa

PROPORTIONS



Sample Image Used

CLARITY CHARACTERISTICS



KEY TO SYMBOLS

Red symbols indicate internal characteristics.
Green symbols indicate external characteristics.

COLOR

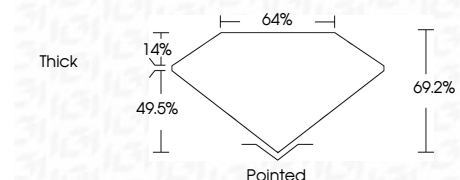
D E F G H I J Faint Very Light Light

CLARITY

FL IF VS 1-2 VS 1-2 SI 1-2 I 1-3
Flawless Internally Flawless Very Very Slightly Included Very Slightly Included Slightly Included Included



October 13, 2025
IGI Report Number LG742523088
Description LABORATORY GROWN DIAMOND
Shape and Cutting Style CUT CORNERED SQUARE MODIFIED BRILLIANT
Measurements 8.04 X 7.90 X 5.47 MM
GRADING RESULTS
Carat Weight 2.94 CARATS
Color Grade E
Clarity Grade VS 2



ADDITIONAL GRADING INFORMATION

Polish EXCELLENT
Symmetry EXCELLENT
Fluorescence NONE
Inscription(s) IGI LG742523088
Comments: This Laboratory Grown Diamond was created by Chemical Vapor Deposition (CVD) growth process.
Type IIa



IGI



October 13, 2025
IGI Report No LG742523088
CUT CORNERED SQUARE MODIFIED BRILLIANT
8.04 X 7.90 X 5.47 MM
2.94 CARATS
E
VS 2
69.2%
64%
Thick
Pointed
EXCELLENT
EXCELLENT
NONE
IGI LG742523088
Comments: This Laboratory Grown Diamond was created by Chemical Vapor Deposition (CVD) growth process.
Type IIa