



**ELECTRONIC COPY**

LG742543842  
Report verification at igi.org



October 13, 2025  
IGI Report Number **LG742543842**  
Description **LABORATORY GROWN DIAMOND**  
Shape and Cutting Style **MARQUISE BRILLIANT**  
Measurements **13.47 X 6.89 X 4.50 MM**  
**GRADING RESULTS**  
Carat Weight **2.41 CARATS**  
Color Grade **D**  
Clarity Grade **INTERNALLY FLAWLESS**

October 13, 2025  
IGI Report Number **LG742543842**  
Description **LABORATORY GROWN DIAMOND**  
Shape and Cutting Style **MARQUISE BRILLIANT**  
Measurements **13.47 X 6.89 X 4.50 MM**

**GRADING RESULTS**

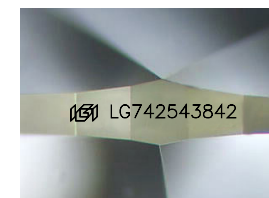
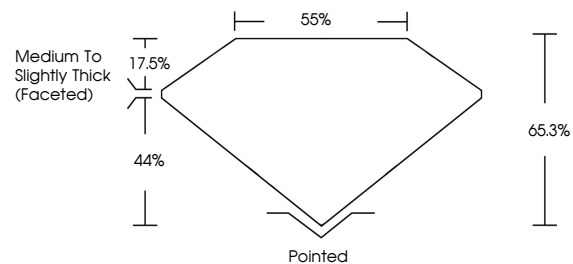
Carat Weight **2.41 CARATS**  
Color Grade **D**  
Clarity Grade **INTERNALLY FLAWLESS**

**ADDITIONAL GRADING INFORMATION**

Polish **EXCELLENT**  
Symmetry **EXCELLENT**  
Fluorescence **NONE**  
Inscription(s) **IGI LG742543842**

Comments: This Laboratory Grown Diamond was created by Chemical Vapor Deposition (CVD) growth process. Type IIa

**PROPORTIONS**



Sample Image Used

**CLARITY CHARACTERISTICS**



**KEY TO SYMBOLS**

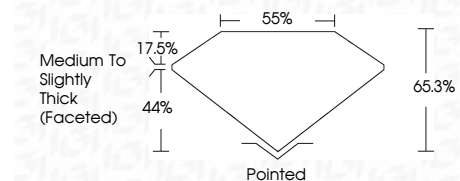
Red symbols indicate internal characteristics.  
Green symbols indicate external characteristics.

**COLOR**

D E F G H I J Faint Very Light Light

**CLARITY**

FL	IF	VS <sup>1-2</sup>	VS <sup>1-2</sup>	SI <sup>1-2</sup>	I <sup>1-3</sup>
Flawless	Internally Flawless	Very Very Slightly Included	Very Slightly Included	Slightly Included	Included



**ADDITIONAL GRADING INFORMATION**

Polish **EXCELLENT**  
Symmetry **EXCELLENT**  
Fluorescence **NONE**  
Inscription(s) **IGI LG742543842**  
Comments: This Laboratory Grown Diamond was created by Chemical Vapor Deposition (CVD) growth process. Type IIa



October 13, 2025  
IGI Report No **LG742543842**  
**MARQUISE BRILLIANT**  
13.47 X 6.89 X 4.50 MM  
2.41 CARATS  
D  
Color Grade  
Clarity Grade  
Table  
Depth  
Girdle  
Medium to Slightly Thick (Faceted)  
65.3%  
Pointed  
EXCELLENT  
EXCELLENT  
NONE  
IGI LG742543842  
Comments: This Laboratory Grown Diamond was created by Chemical Vapor Deposition (CVD) growth process. Type IIa