

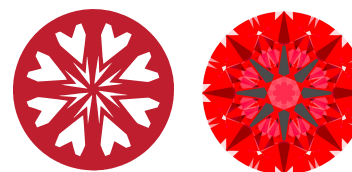


INTERNATIONAL GEMOLOGICAL INSTITUTE

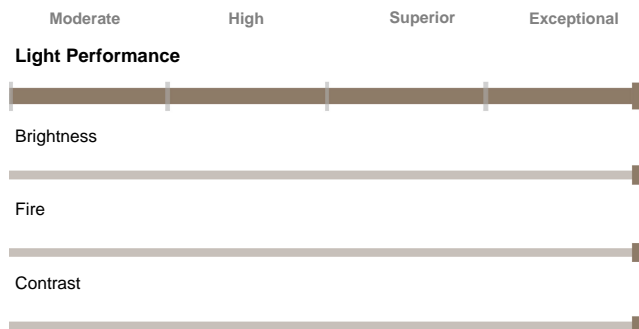
LG742550623
Report verification at igi.org

LIGHT PERFORMANCE REPORT

Light Performance Grade: **Exceptional**



Structured Light Environment Representation



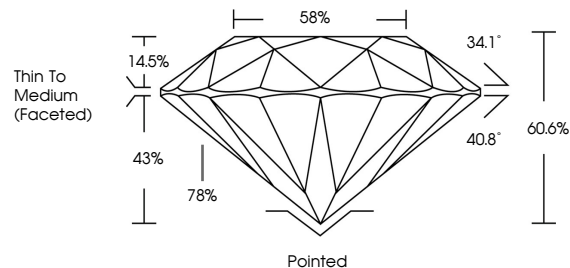
COLOR



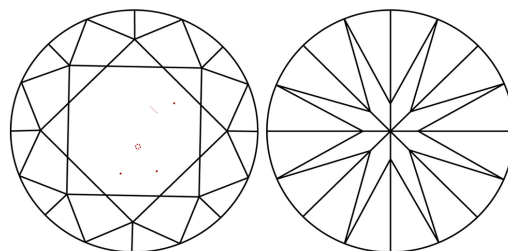
CLARITY



PROPORTIONS

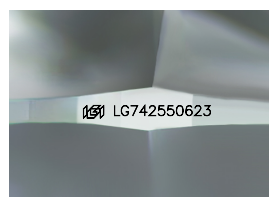


CLARITY CHARACTERISTICS



KEY TO SYMBOLS

Red symbols indicate internal characteristics.
Green symbols indicate external characteristics.



Sample Image Used

www.igi.org

ELECTRONIC COPY

LABORATORY GROWN DIAMOND REPORT

October 16, 2025
 IGI Report Number **LG742550623**
 Description **LABORATORY GROWN DIAMOND**
 Shape and Cutting Style **ROUND BRILLIANT**
 Measurements **9.03 - 9.06 x 5.48 mm**

GRADING RESULTS

Carat Weight **2.73 CARATS**
 Color Grade **D**
 Clarity Grade **VVS 2**
 Cut Grade **IDEAL**

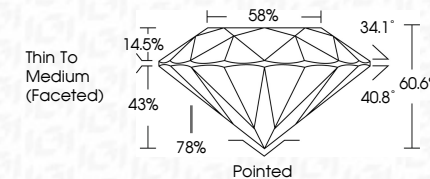
ADDITIONAL GRADING INFORMATION

Polish **EXCELLENT**
 Symmetry **EXCELLENT**
 Fluorescence **NONE**
 Inscription(s) **IGI LG742550623**

Comments: HEARTS & ARROWS
This Laboratory Grown Diamond was created by Chemical Vapor Deposition (CVD) growth process. Type IIa



October 16, 2025
 IGI Report Number **LG742550623**
 Description **LABORATORY GROWN DIAMOND**
 Shape and Cutting Style **ROUND BRILLIANT**
 Measurements **9.03 - 9.06 X 5.48 MM**
GRADING RESULTS
 Carat Weight **2.73 CARATS**
 Color Grade **D**
 Clarity Grade **VVS 2**
 Cut Grade **IDEAL**



ADDITIONAL GRADING INFORMATION

Polish **EXCELLENT**
 Symmetry **EXCELLENT**
 Fluorescence **NONE**
 Inscription(s) **IGI LG742550623**
 Comments: HEARTS & ARROWS
 This Laboratory Grown Diamond was created by Chemical Vapor Deposition (CVD) growth process. Type IIa



IGI

October 16, 2025
 IGI Report No LG742550623
ROUND BRILLIANT
 Carat Weight **2.73 CARATS**
 Color Grade **D**
 Clarity Grade **VVS 2**
 Cut Grade **IDEAL**
 Depth **43%**
 Table **58%**
 Girdle **Thin To Medium (Faceted)**
 Polish **EXCELLENT**
 Symmetry **EXCELLENT**
 Fluorescence **NONE**
 Inscription(s) **IGI LG742550623**
 Comments: HEARTS & ARROWS
 This Laboratory Grown Diamond was created by Chemical Vapor Deposition (CVD) growth process. Type IIa