



INTERNATIONAL GEMOLOGICAL INSTITUTE

ELECTRONIC COPY

LABORATORY GROWN DIAMOND REPORT

October 16, 2025
IGI Report Number **LG743534100**
Description **LABORATORY GROWN DIAMOND**
Shape and Cutting Style **HEART BRILLIANT**
Measurements **4.47 X 5.01 X 2.84 MM**

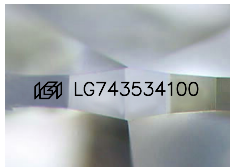
GRADING RESULTS

Carat Weight **0.38 CARAT**
Color Grade **D**
Clarity Grade **VS 1**

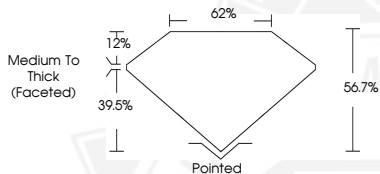
ADDITIONAL GRADING INFORMATION

Polish **VERY GOOD**
Symmetry **VERY GOOD**
Fluorescence **NONE**
Inscription(s) **IGI LG743534100**

Comments: This Laboratory Grown Diamond was created by
Chemical Vapor Deposition (CVD) growth process.
Type IIa



Sample Image Used



October 16, 2025
IGI Report Number **LG743534100**
HEART BRILLIANT
LABORATORY GROWN DIAMOND
4.47 X 5.01 X 2.84 MM
Carat Weight **0.38 CARAT**
Color Grade **D**
Clarity Grade **VS 1**
Polish **VERY GOOD**
Symmetry **VERY GOOD**
Fluorescence **NONE**
Inscription(s) **IGI LG743534100**

Comments: This Laboratory Grown
Diamond was created by
Chemical Vapor Deposition (CVD)
growth process. Type IIa



October 16, 2025
IGI Report Number **LG743534100**
HEART BRILLIANT
LABORATORY GROWN DIAMOND
4.47 X 5.01 X 2.84 MM
Carat Weight **0.38 CARAT**
Color Grade **D**
Clarity Grade **VS 1**
Polish **VERY GOOD**
Symmetry **VERY GOOD**
Fluorescence **NONE**
Inscription(s) **IGI LG743534100**

Comments: This Laboratory Grown
Diamond was created by
Chemical Vapor Deposition (CVD)
growth process. Type IIa



THIS DOCUMENT WAS PRODUCED WITH THE FOLLOWING SECURITY MEASURES: SPECIAL DOCUMENT PAPER, INK SCREENS, WATERMARK, BACKGROUND DESIGNS, HOLOGRAM AND OTHER SECURITY FEATURES NOT LISTED AND DO EXCEED DOCUMENT SECURITY INDUSTRY GUIDELINES.

For terms & conditions and to verify this report, please visit www.igi.org