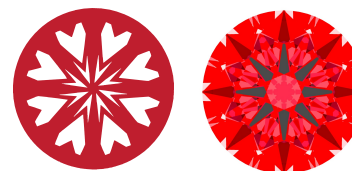
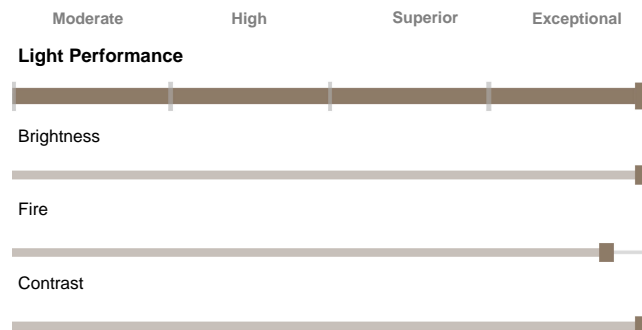




Light Performance Grade: Exceptional



Structured Light Environment Representation



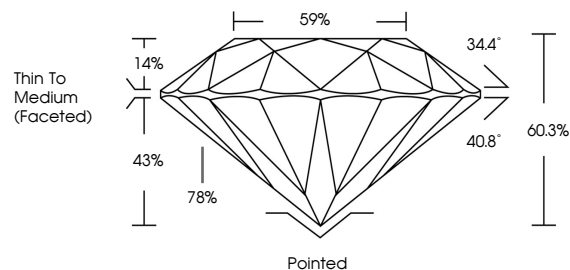
COLOR



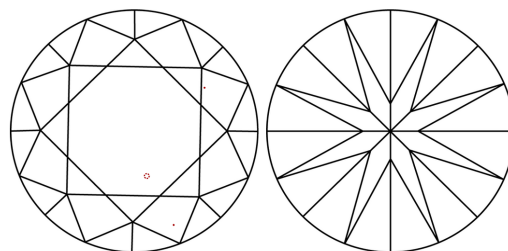
CLARITY



PROPORTIONS

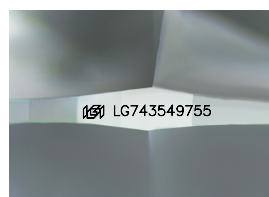


CLARITY CHARACTERISTICS



KEY TO SYMBOLS

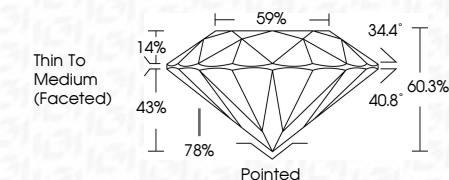
Red symbols indicate internal characteristics. Green symbols indicate external characteristics.



Sample Image Used



October 18, 2025 IGI Report Number LG743549755 Description LABORATORY GROWN DIAMOND Shape and Cutting Style ROUND BRILLIANT Measurements 9.50 - 9.54 X 5.73 MM GRADING RESULTS Carat Weight 3.15 CARATS Color Grade D Clarity Grade VVS 2 Cut Grade IDEAL



ADDITIONAL GRADING INFORMATION Polish EXCELLENT Symmetry EXCELLENT Fluorescence NONE Inscription(s) IGI LG743549755 Comments: HEARTS & ARROWS This Laboratory Grown Diamond was created by Chemical Vapor Deposition (CVD) growth process. Type IIa



October 18, 2025 IGI Report No LG743549755 ROUND BRILLIANT 9.50 - 9.54 X 5.73 MM 3.15 CARATS D VVS 2 IDEAL 60.3% 59% Thin To Medium (Faceted) Pointed EXCELLENT EXCELLENT NONE IGI LG743549755 Comments: HEARTS & ARROWS This Laboratory Grown Diamond was created by Chemical Vapor Deposition (CVD) growth process. Type IIa

ELECTRONIC COPY LABORATORY GROWN DIAMOND REPORT

October 18, 2025 IGI Report Number LG743549755 Description LABORATORY GROWN DIAMOND Shape and Cutting Style ROUND BRILLIANT Measurements 9.50 - 9.54 x 5.73 mm

GRADING RESULTS Carat Weight 3.15 CARATS Color Grade D Clarity Grade VVS 2 Cut Grade IDEAL

ADDITIONAL GRADING INFORMATION Polish EXCELLENT Symmetry EXCELLENT Fluorescence NONE Inscription(s) IGI LG743549755

Comments: HEARTS & ARROWS This Laboratory Grown Diamond was created by Chemical Vapor Deposition (CVD) growth process. Type IIa