



ELECTRONIC COPY

LG743581869
Report verification at igi.org



November 4, 2025

IGI Report Number **LG743581869**

Description **LABORATORY GROWN DIAMOND**

Shape and Cutting Style **EMERALD CUT**

Measurements **8.13 X 5.53 X 3.70 MM**

GRADING RESULTS

Carat Weight **1.69 CARAT**

Color Grade **FANCY VIVID BLUE**

Clarity Grade **VVS 2**

November 4, 2025
IGI Report Number **LG743581869**
Description **LABORATORY GROWN DIAMOND**
Shape and Cutting Style **EMERALD CUT**
Measurements **8.13 X 5.53 X 3.70 MM**

GRADING RESULTS

Carat Weight **1.69 CARAT**

Color Grade **FANCY VIVID BLUE**

Clarity Grade **VVS 2**

ADDITIONAL GRADING INFORMATION

Polish **EXCELLENT**

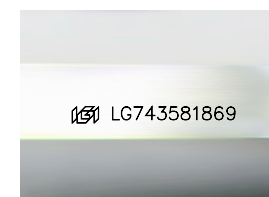
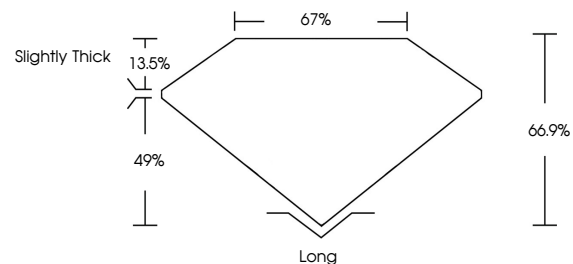
Symmetry **EXCELLENT**

Fluorescence **NONE**

Inscription(s) **LG743581869**

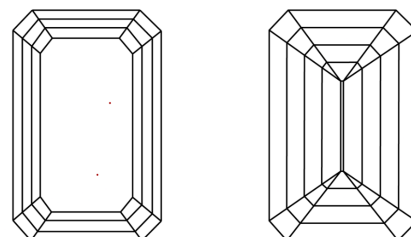
Comments: This Laboratory Grown Diamond was created by Chemical Vapor Deposition (CVD) growth process.
Indications of post-growth treatment.

PROPORTIONS



Sample Image Used

CLARITY CHARACTERISTICS



KEY TO SYMBOLS

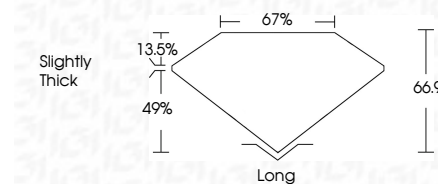
Red symbols indicate internal characteristics.
Green symbols indicate external characteristics.

COLOR

D E F G H I J Faint Very Light Light

CLARITY

FL	IF	VVS ¹⁻²	VS ¹⁻²	SI ¹⁻²	I ¹⁻³
Flawless	Internally Flawless	Very Very Slightly Included	Very Slightly Included	Slightly Included	Included



ADDITIONAL GRADING INFORMATION

Polish **EXCELLENT**

Symmetry **EXCELLENT**

Fluorescence **NONE**

Inscription(s) **LG743581869**

Comments: This Laboratory Grown Diamond was created by Chemical Vapor Deposition (CVD) growth process.
Indications of post-growth treatment.



November 4, 2025
IGI Report No **LG743581869**
EMERALD CUT

1.69 CARAT
Carat Weight
FANCY VIVID BLUE
Color Grade

VVS 2
Clarity Grade
66.9%
Depth
67%
Table
Slightly Thick
Girdle

Long
Culet
EXCELLENT
Polish
EXCELLENT
Symmetry
NONE
Fluorescence
Inscription(s) **LG743581869**

Comments: This Laboratory Grown Diamond was created by Chemical Vapor Deposition (CVD) growth process.
Indications of post-growth treatment.