



**ELECTRONIC COPY**

LG743581884  
Report verification at igi.org



November 4, 2025

IGI Report Number **LG743581884**

Description **LABORATORY GROWN DIAMOND**

Shape and Cutting Style **EMERALD CUT**

Measurements **8.04 X 5.17 X 3.32 MM**

**GRADING RESULTS**

Carat Weight **1.51 CARAT**

Color Grade **FANCY VIVID BLUE**

Clarity Grade **VS 2**

November 4, 2025  
IGI Report Number **LG743581884**  
Description **LABORATORY GROWN DIAMOND**  
Shape and Cutting Style **EMERALD CUT**  
Measurements **8.04 X 5.17 X 3.32 MM**

**GRADING RESULTS**

Carat Weight **1.51 CARAT**

Color Grade **FANCY VIVID BLUE**

Clarity Grade **VS 2**

**ADDITIONAL GRADING INFORMATION**

Polish **EXCELLENT**

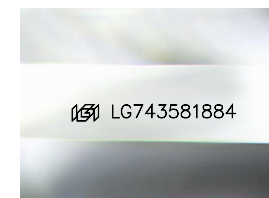
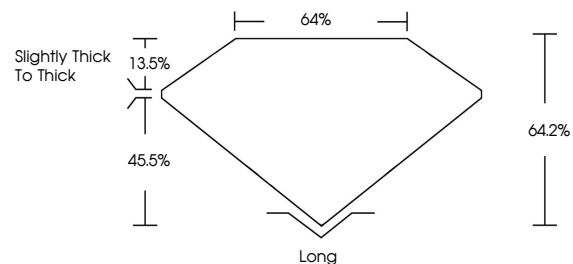
Symmetry **EXCELLENT**

Fluorescence **NONE**

Inscription(s) **LG743581884**

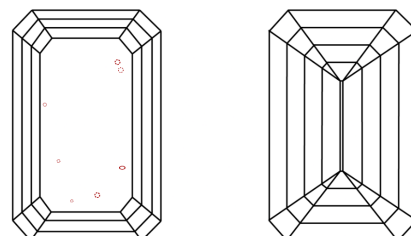
Comments: This Laboratory Grown Diamond was created by Chemical Vapor Deposition (CVD) growth process.  
Indications of post-growth treatment.

**PROPORTIONS**



Sample Image Used

**CLARITY CHARACTERISTICS**



**KEY TO SYMBOLS**

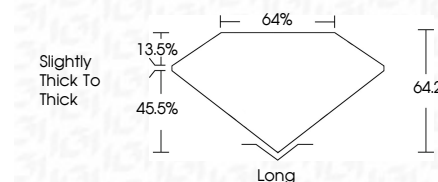
Red symbols indicate internal characteristics.  
Green symbols indicate external characteristics.

**COLOR**

D E F G H I J Faint Very Light Light

**CLARITY**

FL	IF	VS <sup>1-2</sup>	VS <sup>1-2</sup>	SI <sup>1-2</sup>	I <sup>1-3</sup>
Flawless	Internally Flawless	Very Very Slightly Included	Very Slightly Included	Slightly Included	Included



**ADDITIONAL GRADING INFORMATION**

Polish **EXCELLENT**

Symmetry **EXCELLENT**

Fluorescence **NONE**

Inscription(s) **LG743581884**

Comments: This Laboratory Grown Diamond was created by Chemical Vapor Deposition (CVD) growth process.  
Indications of post-growth treatment.



**IGI**



November 4, 2025  
IGI Report No **LG743581884**  
**EMERALD CUT**  
**1.51 CARAT**  
**8.04 X 5.17 X 3.32 MM**  
Carat Weight  
Color Grade **FANCY VIVID BLUE**  
Clarity Grade **VS 2**  
Depth **64.2%**  
Table **64%**  
Girdle **Slightly Thick To Thick**  
Culet **Long**  
Polish **EXCELLENT**  
Symmetry **EXCELLENT**  
Fluorescence **NONE**  
Inscription(s) **LG743581884**

Comments: This Laboratory Grown Diamond was created by Chemical Vapor Deposition (CVD) growth process.  
Indications of post-growth treatment.