



ELECTRONIC COPY

LG743593428
Report verification at igi.org



December 5, 2025

IGI Report Number **LG743593428**

Description **LABORATORY GROWN DIAMOND**

Shape and Cutting Style **MARQUISE BRILLIANT**

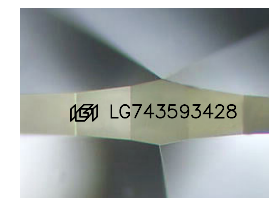
Measurements **11.82 X 5.97 X 3.72 MM**

GRADING RESULTS

Carat Weight **1.52 CARAT**

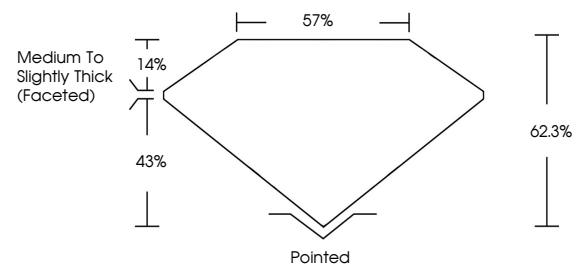
Color Grade **D**

Clarity Grade **VVS 1**

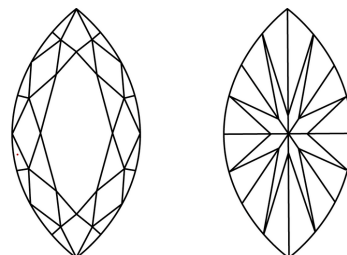


Sample Image Used

PROPORTIONS



CLARITY CHARACTERISTICS



KEY TO SYMBOLS

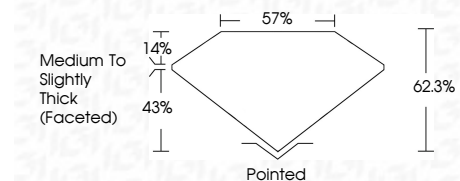
Red symbols indicate internal characteristics.
Green symbols indicate external characteristics.

COLOR

D E F G H I J Faint Very Light Light

CLARITY

FL	IF	VVS ¹⁻²	VS ¹⁻²	SI ¹⁻²	I ¹⁻³
Flawless	Internally Flawless	Very Very Slightly Included	Very Slightly Included	Slightly Included	Included



ADDITIONAL GRADING INFORMATION

Polish **EXCELLENT**

Symmetry **EXCELLENT**

Fluorescence **NONE**

Inscription(s) **IGI LG743593428**

Comments: As Grown - No indication of post-growth treatment.

This Laboratory Grown Diamond was created by High Pressure High Temperature (HPHT) growth process. Type II



December 5, 2025
IGI Report No LG743593428
MARQUISE BRILLIANT

11.82 X 5.97 X 3.72 MM

1.52 CARAT
D

Carat Weight
Color Grade
Clarity Grade
Table
Depth
Girdle
Medium to Slightly Thick (Faceted)

VVS 1
62.3%
57%

Pointed
EXCELLENT
EXCELLENT
NONE
IGI LG743593428

Culet
Polish
Symmetry
Fluorescence
Inscription(s)

None
None
None
None
IGI LG743593428

Comments:
As Grown - No indication of post-growth treatment.
This Laboratory Grown Diamond was created by High Pressure High Temperature (HPHT) growth process. Type II