



October 17, 2025
IGI Report Number LG743598816
ROUND BRILLIANT
LABORATORY GROWN DIAMOND
4.85 - 4.89 X 3.01 MM
0.44 CARAT
E
VVS 1
IDEAL
EXCELLENT
EXCELLENT
NONE
IGI LG743598816
 Comments: This Laboratory Grown Diamond was created by Chemical Vapor Deposition (CVD) growth process. Type IIa

LABORATORY GROWN DIAMOND REPORT

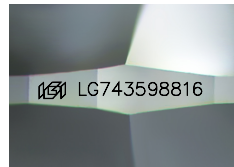
October 17, 2025
 IGI Report Number **LG743598816**
 Description **LABORATORY GROWN DIAMOND**
 Shape and Cutting Style **ROUND BRILLIANT**
 Measurements **4.85 - 4.89 X 3.01 MM**

GRADING RESULTS

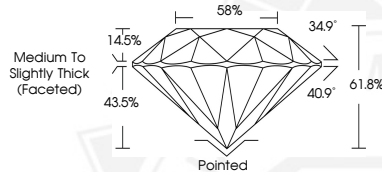
Carat Weight **0.44 CARAT**
 Color Grade **E**
 Clarity Grade **VVS 1**
 Cut Grade **IDEAL**

ADDITIONAL GRADING INFORMATION

Polish **EXCELLENT**
 Symmetry **EXCELLENT**
 Fluorescence **NONE**
 Inscription(s) **IGI LG743598816**
 Comments: This Laboratory Grown Diamond was created by Chemical Vapor Deposition (CVD) growth process.
 Type IIa



Sample Image Used



October 17, 2025
IGI Report Number LG743598816
ROUND BRILLIANT
LABORATORY GROWN DIAMOND
4.85 - 4.89 X 3.01 MM
0.44 CARAT
E
VVS 1
IDEAL
EXCELLENT
EXCELLENT
NONE
IGI LG743598816
 Comments: This Laboratory Grown Diamond was created by Chemical Vapor Deposition (CVD) growth process. Type IIa



THIS DOCUMENT WAS PRODUCED WITH THE FOLLOWING SECURITY MEASURES: SPECIAL DOCUMENT PAPER, INK SCREENS, WATERMARK, BACKGROUND DESIGNS, HOLOGRAM AND OTHER SECURITY FEATURES NOT LISTED AND DO EXCEED DOCUMENT SECURITY INDUSTRY GUIDELINES.