



October 28, 2025

**IGI Report Number LG744506809**  
**CUT CORNERED RECTANGULAR  
MODIFIED BRILLIANT**  
**LABORATORY GROWN DIAMOND**  
**5.38 X 3.80 X 2.82 MM**

Carat Weight **0.50 CARAT**  
Color Grade **D**  
Clarity Grade **VS 1**  
Polish **EXCELLENT**  
Symmetry **EXCELLENT**  
Fluorescence **NONE**  
Inscription(s) **IGI LG744506809**

Comments: As Grown - No indication of post-growth treatment. This Laboratory Grown Diamond was created by High Pressure High Temperature (HPHT) growth process. Type II

**LABORATORY GROWN DIAMOND REPORT**

October 28, 2025

IGI Report Number

**LG744506809**

Description

**LABORATORY GROWN DIAMOND**

Shape and Cutting Style

**CUT CORNERED RECTANGULAR MODIFIED  
BRILLIANT**

Measurements

**5.38 X 3.80 X 2.82 MM**

**GRADING RESULTS**

Carat Weight

**0.50 CARAT**

Color Grade

**D**

Clarity Grade

**VS 1**

**ADDITIONAL GRADING INFORMATION**

Polish

**EXCELLENT**

Symmetry

**EXCELLENT**

Fluorescence

**NONE**

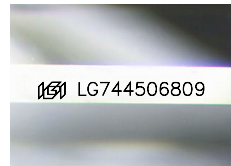
Inscription(s)

**IGI LG744506809**

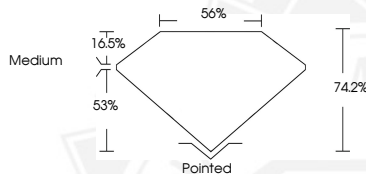
Comments: As Grown - No indication of post-growth treatment.

This Laboratory Grown Diamond was created by High Pressure High Temperature (HPHT) growth process.

Type II



Sample Image Used



October 28, 2025

**IGI Report Number LG744506809**  
**CUT CORNERED RECTANGULAR  
MODIFIED BRILLIANT**  
**LABORATORY GROWN DIAMOND**  
**5.38 X 3.80 X 2.82 MM**

Carat Weight **0.50 CARAT**  
Color Grade **D**  
Clarity Grade **VS 1**  
Polish **EXCELLENT**  
Symmetry **EXCELLENT**  
Fluorescence **NONE**  
Inscription(s) **IGI LG744506809**

Comments: As Grown - No indication of post-growth treatment. This Laboratory Grown Diamond was created by High Pressure High Temperature (HPHT) growth process. Type II



THIS DOCUMENT WAS PRODUCED WITH THE FOLLOWING SECURITY MEASURES: SPECIAL DOCUMENT PAPER, INK SCREENS, WATERMARK, BACKGROUND DESIGNS, HOLOGRAM AND OTHER SECURITY FEATURES NOT LISTED AND DO EXCEED DOCUMENT SECURITY INDUSTRY GUIDELINES.