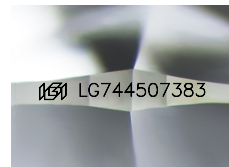




October 18, 2025
IGI Report Number LG744507383
ROUND BRILLIANT
LABORATORY GROWN DIAMOND
4.64 - 4.67 X 2.89 MM
0.38 CARAT
E
VVS 1
IDEAL
EXCELLENT
EXCELLENT
NONE
IGI LG744507383

LABORATORY GROWN DIAMOND REPORT

October 18, 2025
IGI Report Number LG744507383
Description LABORATORY GROWN DIAMOND
Shape and Cutting Style ROUND BRILLIANT
Measurements 4.64 - 4.67 X 2.89 MM



Sample Image Used

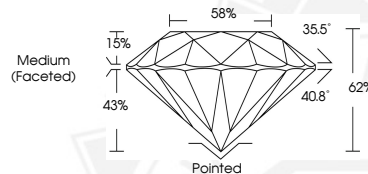
GRADING RESULTS

Carat Weight 0.38 CARAT
Color Grade E
Clarity Grade VVS 1
Cut Grade IDEAL

ADDITIONAL GRADING INFORMATION

Polish EXCELLENT
Symmetry EXCELLENT
Fluorescence NONE
Inscription(s) IGI LG744507383

Comments: This Laboratory Grown Diamond was created by Chemical Vapor Deposition (CVD) growth process. Type IIa



October 18, 2025
IGI Report Number LG744507383
ROUND BRILLIANT
LABORATORY GROWN DIAMOND
4.64 - 4.67 X 2.89 MM
0.38 CARAT
E
VVS 1
IDEAL
EXCELLENT
EXCELLENT
NONE
IGI LG744507383

Comments: This Laboratory Grown Diamond was created by Chemical Vapor Deposition (CVD) growth process. Type IIa



THIS DOCUMENT WAS PRODUCED WITH THE FOLLOWING SECURITY MEASURES: SPECIAL DOCUMENT PAPER, INK SCREENS, WATERMARK, BACKGROUND DESIGNS, HOLOGRAM AND OTHER SECURITY FEATURES NOT LISTED AND DO EXCEED DOCUMENT SECURITY INDUSTRY GUIDELINES.