



**ELECTRONIC COPY**

LG744513985  
Report verification at igi.org



January 27, 2026  
IGI Report Number **LG744513985**  
Description **LABORATORY GROWN DIAMOND**  
Shape and Cutting Style **SQUARE CUSHION MODIFIED BRILLIANT**  
Measurements **9.63 X 9.47 X 6.26 MM**  
**GRADING RESULTS**  
Carat Weight **4.43 CARATS**  
Color Grade **D**  
Clarity Grade **FLAWLESS**

**LABORATORY GROWN DIAMOND REPORT**

January 27, 2026  
IGI Report Number **LG744513985**  
Description **LABORATORY GROWN DIAMOND**  
Shape and Cutting Style **SQUARE CUSHION MODIFIED BRILLIANT**  
Measurements **9.63 X 9.47 X 6.26 MM**

**GRADING RESULTS**

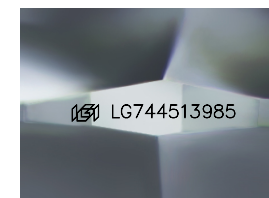
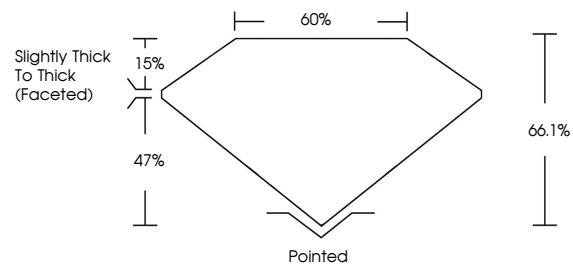
Carat Weight **4.43 CARATS**  
Color Grade **D**  
Clarity Grade **FLAWLESS**

**ADDITIONAL GRADING INFORMATION**

Polish **EXCELLENT**  
Symmetry **EXCELLENT**  
Fluorescence **NONE**  
Inscription(s) **IGI LG744513985**

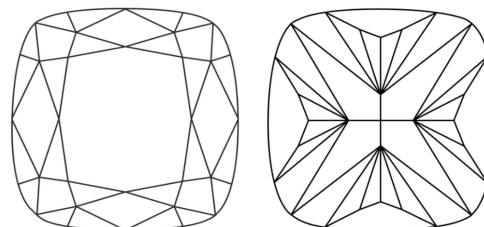
Comments: As Grown - No indication of post-growth treatment.  
This Laboratory Grown Diamond was created by High Pressure High Temperature (HPHT) growth process.  
Type II

**PROPORTIONS**



Sample Image Used

**CLARITY CHARACTERISTICS**



**KEY TO SYMBOLS**

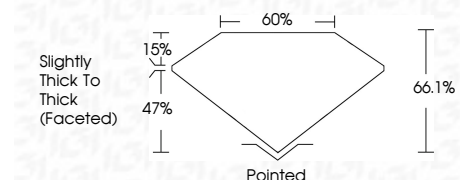
Red symbols indicate internal characteristics.  
Green symbols indicate external characteristics.

**COLOR**

D E F G H I J Faint Very Light Light

**CLARITY**

FL	IF	VS <sup>1-2</sup>	VS <sup>1-2</sup>	SI <sup>1-2</sup>	I <sup>1-3</sup>
Flawless	Internally Flawless	Very Very Slightly Included	Very Slightly Included	Slightly Included	Included



**ADDITIONAL GRADING INFORMATION**

Polish **EXCELLENT**  
Symmetry **EXCELLENT**  
Fluorescence **NONE**  
Inscription(s) **IGI LG744513985**  
Comments: As Grown - No indication of post-growth treatment.  
This Laboratory Grown Diamond was created by High Pressure High Temperature (HPHT) growth process.  
Type II



**IGI**



January 27, 2026  
IGI Report No **LG744513985**  
**SQUARE CUSHION MODIFIED BRILLIANT**  
**4.43 CARATS**  
Carat Weight **D**  
Color Grade **FLAWLESS**  
Clarity Grade **FLAWLESS**  
Depth **66.1%**  
Table **60%**  
Girdle **Slightly Thick To Thick (Faceted)**  
Culet **Pointed**  
Polish **EXCELLENT**  
Symmetry **EXCELLENT**  
Fluorescence **NONE**  
Inscription(s) **IGI LG744513985**  
Comments: As Grown - No indication of post-growth treatment.  
This Laboratory Grown Diamond was created by High Pressure High Temperature (HPHT) growth process.  
Type II