



ELECTRONIC COPY

LABORATORY GROWN DIAMOND REPORT

November 27, 2025  
IGI Report Number LG744515217  
Description LABORATORY GROWN DIAMOND  
Shape and Cutting Style CUT CORNERED RECTANGULAR MODIFIED BRILLIANT  
Measurements 9.18 X 6.13 X 4.03 MM

GRADING RESULTS

Carat Weight 1.91 CARAT  
Color Grade D  
Clarity Grade FLAWLESS

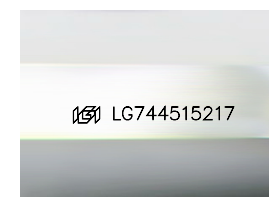
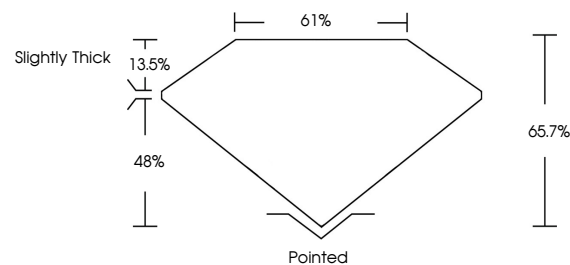
ADDITIONAL GRADING INFORMATION

Polish EXCELLENT  
Symmetry EXCELLENT  
Fluorescence NONE

Inscription(s) IGI LG744515217

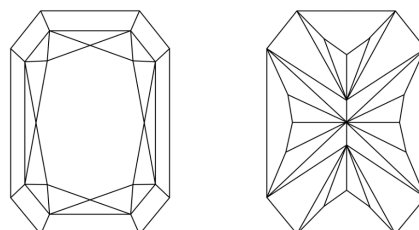
Comments: As Grown - No indication of post-growth treatment.  
This Laboratory Grown Diamond was created by High Pressure High Temperature (HPHT) growth process.  
Type II

PROPORTIONS



Sample Image Used

CLARITY CHARACTERISTICS



KEY TO SYMBOLS

Red symbols indicate internal characteristics.  
Green symbols indicate external characteristics.

COLOR

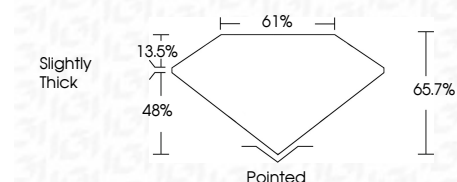
D E F G H I J Faint Very Light Light

CLARITY

FL	IF	VS <sup>1-2</sup>	VS <sup>1-2</sup>	SI <sup>1-2</sup>	I <sup>1-3</sup>
Flawless	Internally Flawless	Very Very Slightly Included	Very Slightly Included	Slightly Included	Included



November 27, 2025  
IGI Report Number LG744515217  
Description LABORATORY GROWN DIAMOND  
Shape and Cutting Style CUT CORNERED RECTANGULAR MODIFIED BRILLIANT  
Measurements 9.18 X 6.13 X 4.03 MM  
GRADING RESULTS  
Carat Weight 1.91 CARAT  
Color Grade D  
Clarity Grade FLAWLESS



ADDITIONAL GRADING INFORMATION

Polish EXCELLENT  
Symmetry EXCELLENT  
Fluorescence NONE  
Inscription(s) IGI LG744515217  
Comments: As Grown - No indication of post-growth treatment.  
This Laboratory Grown Diamond was created by High Pressure High Temperature (HPHT) growth process.  
Type II



November 27, 2025  
IGI Report No LG744515217  
CUT CORNERED RECT. MODIFIED BRILLIANT  
9.18 X 6.13 X 4.03 MM  
1.91 CARAT  
D  
FLAWLESS  
65.7%  
61%  
Slightly Thick  
Pointed  
EXCELLENT  
EXCELLENT  
NONE  
IGI LG744515217

Comments: As Grown - No indication of post-growth treatment.  
This Laboratory Grown Diamond was created by High Pressure High Temperature (HPHT) growth process.  
Type II