



ELECTRONIC COPY

LG744516385
Report verification at igi.org



November 4, 2025
IGI Report Number **LG744516385**
Description **LABORATORY GROWN DIAMOND**
Shape and Cutting Style **CUT CORNERED SQUARE
MODIFIED BRILLIANT**
Measurements **12.71 X 12.12 X 7.60 MM**
GRADING RESULTS
Carat Weight **11.74 CARATS**
Color Grade **FANCY VIVID YELLOW**
Clarity Grade **VS 1**

November 4, 2025
IGI Report Number **LG744516385**
Description **LABORATORY GROWN DIAMOND**
Shape and Cutting Style **CUT CORNERED SQUARE
MODIFIED BRILLIANT**
Measurements **12.71 X 12.12 X 7.60 MM**

GRADING RESULTS

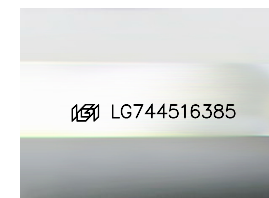
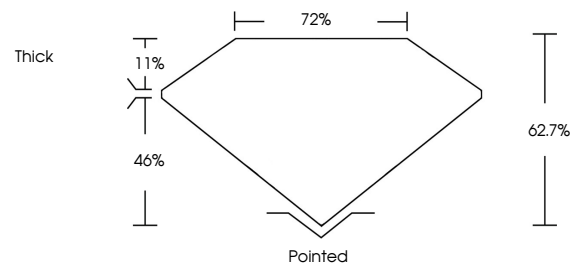
Carat Weight **11.74 CARATS**
Color Grade **FANCY VIVID YELLOW**
Clarity Grade **VS 1**

ADDITIONAL GRADING INFORMATION

Polish **EXCELLENT**
Symmetry **EXCELLENT**
Fluorescence **NONE**
Inscription(s) **IGI LG744516385**

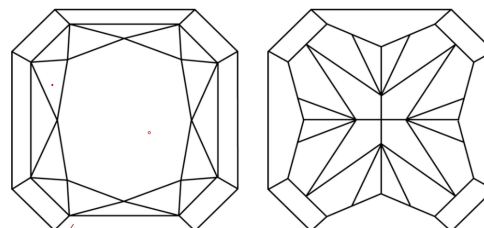
Comments: This Laboratory Grown Diamond was created by Chemical Vapor Deposition (CVD) growth process.

PROPORTIONS



Sample Image Used

CLARITY CHARACTERISTICS



KEY TO SYMBOLS

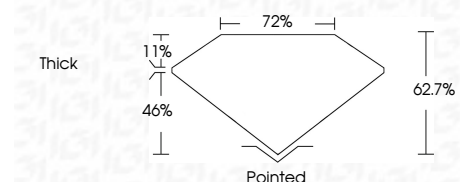
Red symbols indicate internal characteristics.
Green symbols indicate external characteristics.

COLOR

D E F G H I J Faint Very Light Light

CLARITY

FL	IF	VS ¹⁻²	VS ¹⁻²	SI ¹⁻²	I ¹⁻³
Flawless	Internally Flawless	Very Very Slightly Included	Very Slightly Included	Slightly Included	Included



ADDITIONAL GRADING INFORMATION

Polish **EXCELLENT**
Symmetry **EXCELLENT**
Fluorescence **NONE**
Inscription(s) **IGI LG744516385**
Comments: This Laboratory Grown Diamond was created by Chemical Vapor Deposition (CVD) growth process.



November 4, 2025
IGI Report No **LG744516385**
CUT CORNERED SQUARE MODIFIED BRILLIANT
12.71 X 12.12 X 7.60 MM
Carat Weight **11.74 CARATS**
Color Grade **FANCY VIVID YELLOW**
Clarity Grade **VS 1**
Depth **62.7%**
Table **72%**
Girdle **Thick**
Culet **Pointed**
Polish **EXCELLENT**
Symmetry **EXCELLENT**
Fluorescence **NONE**
Inscription(s) **IGI LG744516385**
Comments: This Laboratory Grown Diamond was created by Chemical Vapor Deposition (CVD) growth process.