



ELECTRONIC COPY

LABORATORY GROWN DIAMOND REPORT

October 29, 2025
IGI Report Number **LG744522327**

Description **LABORATORY GROWN DIAMOND**

Shape and Cutting Style **CUT CORNERED RECTANGULAR
MODIFIED BRILLIANT**

Measurements **7.47 X 5.58 X 3.70 MM**

GRADING RESULTS

Carat Weight **1.31 CARAT**

Color Grade **D**

Clarity Grade **VVS 1**

ADDITIONAL GRADING INFORMATION

Polish **EXCELLENT**

Symmetry **VERY GOOD**

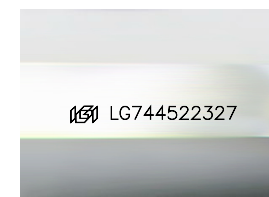
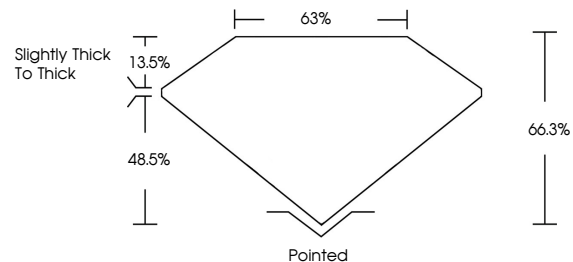
Fluorescence **NONE**

Inscription(s) **IGI LG744522327**

Comments: As Grown - No indication of post-growth treatment.

This Laboratory Grown Diamond was created by High Pressure High Temperature (HPHT) growth process. Type II

PROPORTIONS



Sample Image Used

COLOR

D E F G H I J Faint Very Light Light

CLARITY

| FL | IF | VVS ¹⁻² | VS ¹⁻² | SI ¹⁻² | I ¹⁻³ |
|----------|---------------------|-----------------------------|------------------------|-------------------|------------------|
| Flawless | Internally Flawless | Very Very Slightly Included | Very Slightly Included | Slightly Included | Included |



October 29, 2025

IGI Report Number **LG744522327**

Description **LABORATORY GROWN DIAMOND**

Shape and Cutting Style **CUT CORNERED
RECTANGULAR MODIFIED
BRILLIANT**

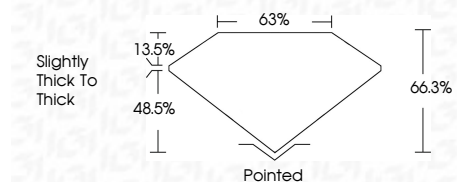
Measurements **7.47 X 5.58 X 3.70 MM**

GRADING RESULTS

Carat Weight **1.31 CARAT**

Color Grade **D**

Clarity Grade **VVS 1**



ADDITIONAL GRADING INFORMATION

Polish **EXCELLENT**

Symmetry **VERY GOOD**

Fluorescence **NONE**

Inscription(s) **IGI LG744522327**

Comments: As Grown - No indication of post-growth treatment.

This Laboratory Grown Diamond was created by High Pressure High Temperature (HPHT) growth process. Type II



IGI



October 29, 2025
IGI Report No. LG744522327
CUT CORNERED RECT. MODIFIED BRILLIANT
7.47 X 5.58 X 3.70 MM
Carat Weight 1.31 CARAT
Color Grade D
Clarity Grade VVS 1
Depth 66.3%
Table 63%
Girdle Slightly thick to thick
Culet Pointed
Polish EXCELLENT
Symmetry VERY GOOD
Fluorescence NONE
Inscription(s) IGI LG744522327

Comments: As Grown - No indication of post-growth treatment.
This Laboratory Grown Diamond was created by High Pressure High Temperature (HPHT) growth process. Type II