



ELECTRONIC COPY

LG744522390
Report verification at igi.org



November 3, 2025
IGI Report Number **LG744522390**
Description **LABORATORY GROWN DIAMOND**
Shape and Cutting Style **CUT CORNERED
RECTANGULAR MODIFIED
BRILLIANT**
Measurements **8.41 X 5.87 X 3.83 MM**
GRADING RESULTS
Carat Weight **1.63 CARAT**
Color Grade **D**
Clarity Grade **VVS 1**

November 3, 2025
IGI Report Number **LG744522390**
Description **LABORATORY GROWN DIAMOND**
Shape and Cutting Style **CUT CORNERED RECTANGULAR
MODIFIED BRILLIANT**
Measurements **8.41 X 5.87 X 3.83 MM**

GRADING RESULTS

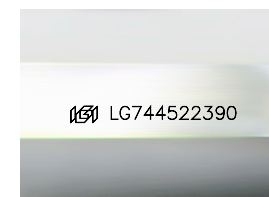
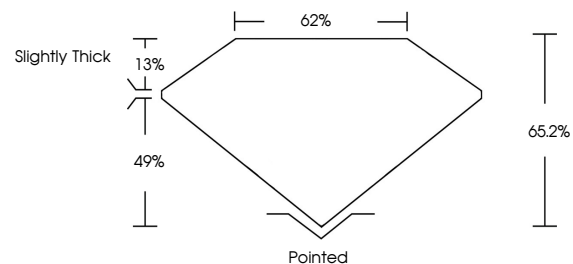
Carat Weight **1.63 CARAT**
Color Grade **D**
Clarity Grade **VVS 1**

ADDITIONAL GRADING INFORMATION

Polish **EXCELLENT**
Symmetry **EXCELLENT**
Fluorescence **NONE**
Inscription(s) **IGI LG744522390**

Comments: As Grown - No indication of post-growth treatment.
This Laboratory Grown Diamond was created by High Pressure High Temperature (HPHT) growth process. Type II

PROPORTIONS



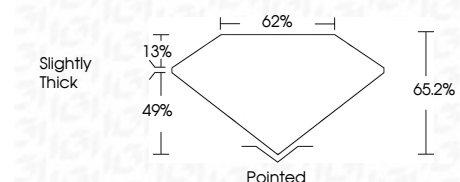
Sample Image Used

COLOR

D E F G H I J Faint Very Light Light

CLARITY

FL	IF	VVS ¹⁻²	VS ¹⁻²	SI ¹⁻²	I ¹⁻³
Flawless	Internally Flawless	Very Very Slightly Included	Very Slightly Included	Slightly Included	Included



ADDITIONAL GRADING INFORMATION

Polish **EXCELLENT**
Symmetry **EXCELLENT**
Fluorescence **NONE**
Inscription(s) **IGI LG744522390**
Comments: As Grown - No indication of post-growth treatment.
This Laboratory Grown Diamond was created by High Pressure High Temperature (HPHT) growth process. Type II



IGI



November 3, 2025
IGI Report No **LG744522390**
CUT CORNERED RECT. MODIFIED BRILLIANT
8.41 X 5.87 X 3.83 MM
Carat Weight **1.63 CARAT**
Color Grade **D**
Clarity Grade **VVS 1**
Depth **49%**
Table **13%**
Girdle **62%**
Slightly Thick
Culet **Pointed**
Polish **EXCELLENT**
Symmetry **EXCELLENT**
Fluorescence **NONE**
Inscription(s) **IGI LG744522390**

Comments: As Grown - No indication of post-growth treatment.
This Laboratory Grown Diamond was created by High Pressure High Temperature (HPHT) growth process. Type II