



ELECTRONIC COPY

LG746514681
Report verification at igi.org



December 4, 2025
IGI Report Number **LG746514681**
Description **LABORATORY GROWN DIAMOND**
Shape and Cutting Style **CUSHION MODIFIED BRILLIANT**
Measurements **8.64 X 7.43 X 5.15 MM**
GRADING RESULTS
Carat Weight **2.55 CARATS**
Color Grade **FANCY INTENSE PINK**
Clarity Grade **VS 1**

December 4, 2025
IGI Report Number **LG746514681**
Description **LABORATORY GROWN DIAMOND**
Shape and Cutting Style **CUSHION MODIFIED BRILLIANT**
Measurements **8.64 X 7.43 X 5.15 MM**

GRADING RESULTS

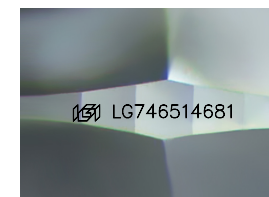
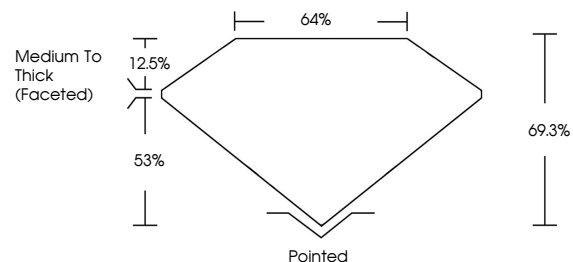
Carat Weight **2.55 CARATS**
Color Grade **FANCY INTENSE PINK**
Clarity Grade **VS 1**

ADDITIONAL GRADING INFORMATION

Polish **EXCELLENT**
Symmetry **EXCELLENT**
Fluorescence **STRONG**
Inscription(s) **IGI LG746514681**

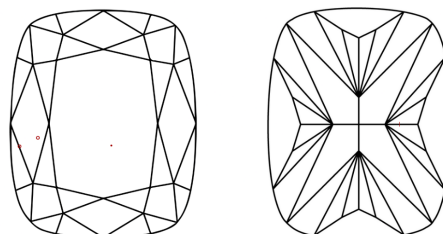
Comments: This Laboratory Grown Diamond was created by Chemical Vapor Deposition (CVD) growth process. Indications of post-growth treatment.

PROPORTIONS



Sample Image Used

CLARITY CHARACTERISTICS



KEY TO SYMBOLS

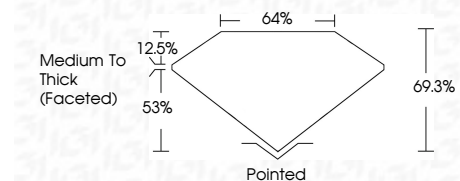
Red symbols indicate internal characteristics.
Green symbols indicate external characteristics.

COLOR

D E F G H I J Faint Very Light Light

CLARITY

FL	IF	VS ¹⁻²	VS ¹⁻²	SI ¹⁻²	I ¹⁻³
Flawless	Internally Flawless	Very Very Slightly Included	Very Slightly Included	Slightly Included	Included



ADDITIONAL GRADING INFORMATION

Polish **EXCELLENT**
Symmetry **EXCELLENT**
Fluorescence **STRONG**
Inscription(s) **IGI LG746514681**
Comments: This Laboratory Grown Diamond was created by Chemical Vapor Deposition (CVD) growth process. Indications of post-growth treatment.



IGI



December 4, 2025
IGI Report No LG746514681
CUSHION MODIFIED BRILLIANT
8.64 X 7.43 X 5.15 MM
2.55 CARATS
FANCY INTENSE PINK
VS 1
69.3%
64%
Medium To Thick (Faceted)
Pointed
EXCELLENT
EXCELLENT
STRONG
IGI LG746514681
Comments: This Laboratory Grown Diamond was created by Chemical Vapor Deposition (CVD) growth process. Indications of post-growth treatment.