



ELECTRONIC COPY

LG746516940
Report verification at igi.org



December 24, 2025

IGI Report Number **LG746516940**

Description **LABORATORY GROWN DIAMOND**

Shape and Cutting Style **PRINCESS CUT**

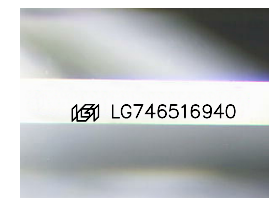
Measurements **7.50 X 7.28 X 5.21 MM**

GRADING RESULTS

Carat Weight **2.50 CARATS**

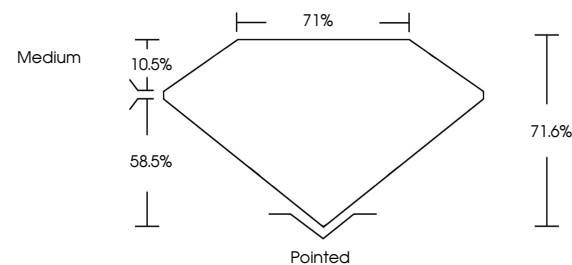
Color Grade **E**

Clarity Grade **VS 1**

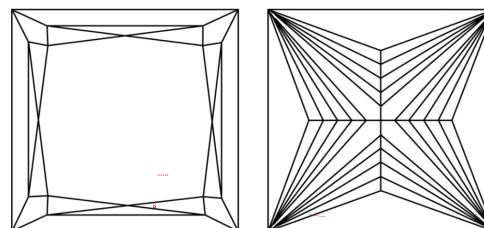


Sample Image Used

PROPORTIONS



CLARITY CHARACTERISTICS



KEY TO SYMBOLS

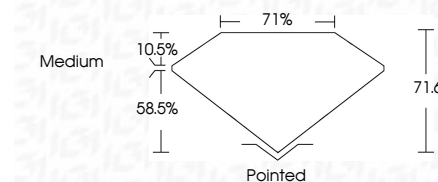
Red symbols indicate internal characteristics.
Green symbols indicate external characteristics.

COLOR

D E F G H I J Faint Very Light Light

CLARITY

FL	IF	VS ¹⁻²	VS ¹⁻²	SI ¹⁻²	I ¹⁻³
Flawless	Internally Flawless	Very Very Slightly Included	Very Slightly Included	Slightly Included	Included



ADDITIONAL GRADING INFORMATION

Polish **EXCELLENT**

Symmetry **EXCELLENT**

Fluorescence **NONE**

Inscription(s) **IGI LG746516940**

Comments: This Laboratory Grown Diamond was created by Chemical Vapor Deposition (CVD) growth process. Type IIa



IGI



December 24, 2025	2.50 CARATS	E	VS 1	71.6%	71%	Medium	Pointed
IGI Report No LG746516940	7.50 X 7.28 X 5.21 MM	PRINCESS CUT	EXCELLENT	EXCELLENT	NONE	IGI LG746516940	
	Carat Weight	Color Grade	Clarity Grade	Depth	Table	Girdle	Culet
							Polish
							Symmetry
							Fluorescence
							Inscription(s)

Comments: This Laboratory Grown Diamond was created by Chemical Vapor Deposition (CVD) growth process. Type IIa