



INTERNATIONAL GEMOLOGICAL INSTITUTE

LABORATORY GROWN DIAMOND REPORT

November 7, 2025

IGI Report Number

LG746523391

Description

LABORATORY GROWN DIAMOND

Shape and Cutting Style

ROUND BRILLIANT

Measurements

5.91 - 5.93 X 3.66 MM

GRADING RESULTS

Carat Weight

0.78 CARAT

Color Grade

F

Clarity Grade

VVS 2

Cut Grade

IDEAL

ADDITIONAL GRADING INFORMATION

Polish

EXCELLENT

Symmetry

EXCELLENT

Fluorescence

NONE

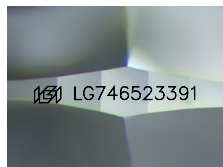
Inscription(s)

IGI LG746523391

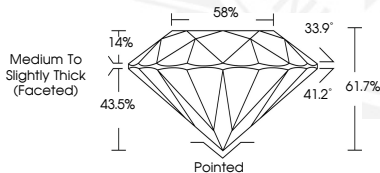
Comments: This Laboratory Grown Diamond was created by Chemical Vapor Deposition (CVD) growth process. Type IIa

ELECTRONIC COPY

LG746523391



Sample Image Used



November 7, 2025

IGI Report Number LG746523391

ROUND BRILLIANT

LABORATORY GROWN DIAMOND

5.91 - 5.93 X 3.66 MM

Carat Weight 0.78 CARAT

Color Grade F

Clarity Grade VVS 2

Cut Grade IDEAL

Polish EXCELLENT

Symmetry EXCELLENT

Fluorescence NONE

Inscription(s) IGI LG746523391

Comments: This Laboratory Grown Diamond was created by Chemical Vapor Deposition (CVD) growth process. Type IIa



November 7, 2025

IGI Report Number LG746523391

ROUND BRILLIANT

LABORATORY GROWN DIAMOND

5.91 - 5.93 X 3.66 MM

Carat Weight 0.78 CARAT

Color Grade F

Clarity Grade VVS 2

Cut Grade IDEAL

Polish EXCELLENT

Symmetry EXCELLENT

Fluorescence NONE

Inscription(s) IGI LG746523391

Comments: This Laboratory Grown Diamond was created by Chemical Vapor Deposition (CVD) growth process. Type IIa

Certified
SUSTAINABILITY RATED
DIAMOND

SCS GLOBAL SERVICES

All certified diamonds come with an individual certificate, ONLY available at an accredited retailer



FOR THE SUSTAINABILITY RATED CERTIFICATE, SCAN HERE →



THIS DOCUMENT WAS PRODUCED WITH THE FOLLOWING SECURITY MEASURES: SPECIAL DOCUMENT PAPER, INK SCREENS, WATERMARK BACKGROUND DESIGNS, HOLOGRAM AND OTHER SECURITY FEATURES NOT LISTED AND DO EXCEED DOCUMENT SECURITY INDUSTRY GUIDELINES.

For terms & conditions and to verify this report, please visit www.igi.org