



**INTERNATIONAL
GEMOLOGICAL
INSTITUTE**

ELECTRONIC COPY



November 3, 2025

IGI Report Number LG746526678

**ROUND BRILLIANT
LABORATORY GROWN DIAMOND
4.69 - 4.71 X 2.83 MM**

**0.38 CARAT
D
VS 1
IDEAL
EXCELLENT
EXCELLENT
NONE
IGI LG746526678**

Comments: This Laboratory Grown Diamond was created by Chemical Vapor Deposition (CVD) growth process. Type IIa

LABORATORY GROWN DIAMOND REPORT

November 3, 2025
IGI Report Number **LG746526678**
Description **LABORATORY GROWN DIAMOND**
Shape and Cutting Style **ROUND BRILLIANT**
Measurements **4.69 - 4.71 X 2.83 MM**

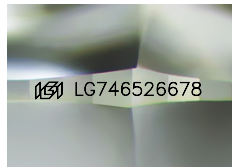
GRADING RESULTS

Carat Weight **0.38 CARAT**
Color Grade **D**
Clarity Grade **VS 1**
Cut Grade **IDEAL**

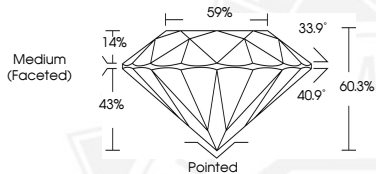
ADDITIONAL GRADING INFORMATION

Polish **EXCELLENT**
Symmetry **EXCELLENT**
Fluorescence **NONE**
Inscription(s) **IGI LG746526678**

Comments: This Laboratory Grown Diamond was created by Chemical Vapor Deposition (CVD) growth process. Type IIa



Sample Image Used



November 3, 2025

IGI Report Number LG746526678

**ROUND BRILLIANT
LABORATORY GROWN DIAMOND
4.69 - 4.71 X 2.83 MM**

**0.38 CARAT
D
VS 1
IDEAL
EXCELLENT
EXCELLENT
NONE
IGI LG746526678**

Comments: This Laboratory Grown Diamond was created by Chemical Vapor Deposition (CVD) growth process. Type IIa



THIS DOCUMENT WAS PRODUCED WITH THE FOLLOWING SECURITY MEASURES: SPECIAL DOCUMENT PAPER, INK SCREENS, WATERMARK, BACKGROUND DESIGNS, HOLOGRAM AND OTHER SECURITY FEATURES NOT LISTED AND DO EXCEED DOCUMENT SECURITY INDUSTRY GUIDELINES.

For terms & conditions and to verify this report, please visit www.igi.org