



November 28, 2025

IGI Report Number LG747513572

**ROUND BRILLIANT
LABORATORY GROWN DIAMOND
5.49 - 5.54 X 3.31 MM**

**0.62 CARAT
D
VS 1
IDEAL
EXCELLENT
EXCELLENT
NONE
IGI LG747513572**

LABORATORY GROWN DIAMOND REPORT

November 28, 2025
IGI Report Number **LG747513572**
Description **LABORATORY GROWN DIAMOND**
Shape and Cutting Style **ROUND BRILLIANT**
Measurements **5.49 - 5.54 X 3.31 MM**

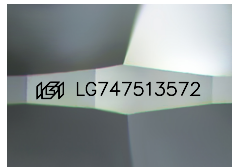
GRADING RESULTS

Carat Weight **0.62 CARAT**
Color Grade **D**
Clarity Grade **VS 1**
Cut Grade **IDEAL**

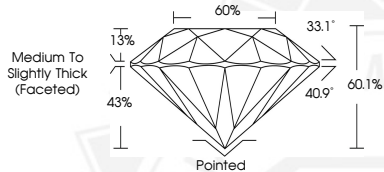
ADDITIONAL GRADING INFORMATION

Polish **EXCELLENT**
Symmetry **EXCELLENT**
Fluorescence **NONE**
Inscription(s) **IGI LG747513572**

Comments: As Grown - No indication of post-growth treatment. This Laboratory Grown Diamond was created by High Pressure High Temperature (HPHT) growth process. Type II



Sample Image Used



November 28, 2025

IGI Report Number LG747513572

**ROUND BRILLIANT
LABORATORY GROWN DIAMOND
5.49 - 5.54 X 3.31 MM**

**0.62 CARAT
D
VS 1
IDEAL
EXCELLENT
EXCELLENT
NONE
IGI LG747513572**

Comments: As Grown - No indication of post-growth treatment. This Laboratory Grown Diamond was created by High Pressure High Temperature (HPHT) growth process. Type II



THIS DOCUMENT WAS PRODUCED WITH THE FOLLOWING SECURITY MEASURES: SPECIAL DOCUMENT PAPER, INK SCREENS, WATERMARK, BACKGROUND DESIGNS, HOLOGRAM AND OTHER SECURITY FEATURES NOT LISTED AND DO EXCEED DOCUMENT SECURITY INDUSTRY GUIDELINES.