



INTERNATIONAL GEMOLOGICAL INSTITUTE

LABORATORY GROWN DIAMOND REPORT

November 6, 2025

IGI Report Number

LG747518666

Description

LABORATORY GROWN DIAMOND

Shape and Cutting Style

PRINCESS CUT

Measurements

4.53 X 4.42 X 3.18 MM

GRADING RESULTS

Carat Weight

0.55 CARAT

Color Grade

E

Clarity Grade

VVS 2

ADDITIONAL GRADING INFORMATION

Polish

EXCELLENT

Symmetry

VERY GOOD

Fluorescence

NONE

Inscription(s)

IGI LG747518666

Comments: This Laboratory Grown Diamond was created by Chemical Vapor Deposition (CVD) growth process. Type IIa

Certified
**SUSTAINABILITY RATED
DIAMOND**

SCS GLOBAL SERVICES

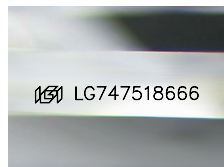
All certified diamonds come with an individual certificate, **ONLY** available at an accredited retailer



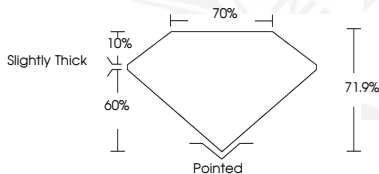
FOR THE SUSTAINABILITY RATED CERTIFICATE, SCAN HERE →

ELECTRONIC COPY

LG747518666



Sample Image Used



November 6, 2025

IGI Report Number LG747518666

PRINCESS CUT

LABORATORY GROWN DIAMOND

4.53 X 4.42 X 3.18 MM

Carat Weight 0.55 CARAT

Color Grade E

Clarity Grade VVS 2

Polish EXCELLENT

Symmetry VERY GOOD

Fluorescence NONE

Inscription(s) IGI LG747518666

Comments: This Laboratory Grown Diamond was created by Chemical Vapor Deposition (CVD) growth process. Type IIa



November 6, 2025

IGI Report Number LG747518666

PRINCESS CUT

LABORATORY GROWN DIAMOND

4.53 X 4.42 X 3.18 MM

Carat Weight 0.55 CARAT

Color Grade E

Clarity Grade VVS 2

Polish EXCELLENT

Symmetry VERY GOOD

Fluorescence NONE

Inscription(s) IGI LG747518666

Comments: This Laboratory Grown Diamond was created by Chemical Vapor Deposition (CVD) growth process. Type IIa



THIS DOCUMENT WAS PRODUCED WITH THE FOLLOWING SECURITY MEASURES: SPECIAL DOCUMENT PAPER, INK SCREENS, WATERMARK BACKGROUND DESIGNS, HOLOGRAM AND OTHER SECURITY FEATURES NOT LISTED AND DO EXCEED DOCUMENT SECURITY INDUSTRY GUIDELINES.

For terms & conditions and to verify this report, please visit www.igi.org