

**ELECTRONIC COPY**

## LABORATORY GROWN DIAMOND REPORT

LG747521236  
Report verification at [igi.org](https://igi.org)

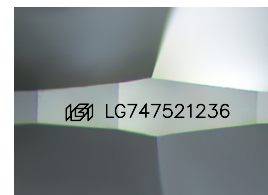
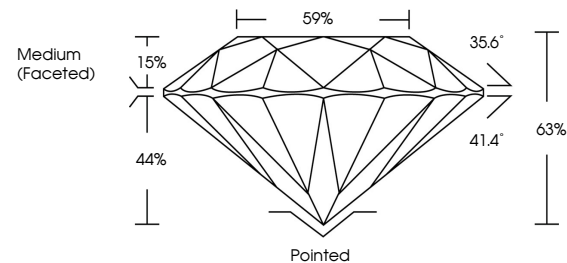
November 20, 2025	
IGI Report Number	LG747521236
Description	LABORATORY GROWN DIAMOND
Shape and Cutting Style	ROUND BRILLIANT
Measurements	6.90 - 6.95 X 4.37 MM
GRADING RESULTS	
Carat Weight	1.30 CARAT
Color Grade	D
Clarity Grade	VS 1
Cut Grade	EXCELLENT

### ADDITIONAL GRADING INFORMATION

Polish	EXCELLENT
Symmetry	EXCELLENT
Fluorescence	NONE
Inscription(s)	 LG747521236

Comments: As Grown - No indication of post-growth treatment.  
This Laboratory Grown Diamond was created by High Pressure High Temperature (HPHT) growth process.  
Type II

## PROPORTIONS



Sample Image Used

## COLOR

D E F G H I J Faint Very Light Light

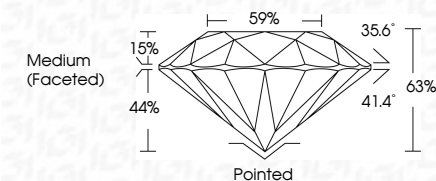
## CLARITY

FL	IF	VVS <sup>1-2</sup>	VS <sup>1-2</sup>	SI <sup>1-2</sup>	I <sup>1-3</sup>
Flawless	Internally Flawless	Very Very Slightly Included	Very Slightly Included	Slightly Included	Included

## LABORATORY GROWN DIAMOND REPORT



November 20, 2025	
IGI Report Number	LG747521236
Description	LABORATORY GROWN DIAMOND
Shape and Cutting Style	ROUND BRILLIANT
Measurements	6.90 - 6.95 X 4.37 MM
GRADING RESULTS	
Carat Weight	1.30 CARAT
Color Grade	D
Clarity Grade	VS 1
Cut Grade	EXCELLENT



### ADDITIONAL GRADING INFORMATION

Polish	EXCELLENT
Symmetry	EXCELLENT
Fluorescence	NONE
Inscription(s)	<del>(G)</del> LG747521236
Comments: As Grown - No indication of post-growth treatment.	
This Laboratory Grown Diamond was created by High Pressure High Temperature (HPHT) growth process.	
Type II	



November 20, 2025  
IGI Report No LG747521236  
ROUND BRILLIANT

6.90 - 6.95 X 4.37 MM  
Carat Weight 1.90 CARAT

0.90 - 0.90 X 4.37 MM	1.30 CARAT
Carat Weight	
Color Grade	D

Clarity Grade	VS 1	Excellent
Clarity Grade		

Cut Grade	EXCELLENT
Depth	63%
Table	59%

Table	5976
Girdle	Medium (Faceted)

	Culet	Pointed
Polish	Excellent	Excellent

Polish	EXCELLENT
Symmetry	EXCELLENT
Fluorescence	NONE

Inscription(s)	None
191 LG747521286	

**Comments:**  
As Grown - No Indication of post-growth treatment

This Laboratory Grown Diamond was created by High Pressure High Temperature (HPHT) growth process

Type II  
temperature (ninth) growth process.