



**INTERNATIONAL  
GEMOLOGICAL  
INSTITUTE**

**ELECTRONIC COPY**

## LABORATORY GROWN DIAMOND REPORT

LG747521396  
Report verification at [igi.org](https://igi.org)

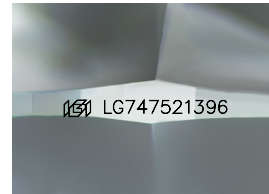
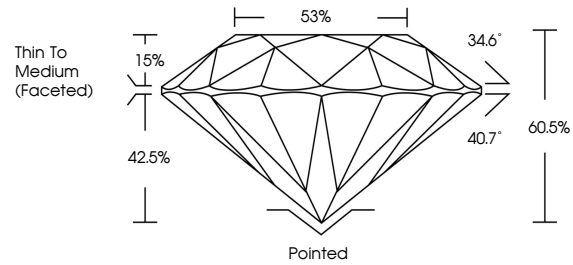
|                         |                          |
|-------------------------|--------------------------|
| November 20, 2025       |                          |
| IGI Report Number       | LG747521396              |
| Description             | LABORATORY GROWN DIAMOND |
| Shape and Cutting Style | ROUND BRILLIANT          |
| Measurements            | 6.48 - 6.51 X 3.93 MM    |
| GRADING RESULTS         |                          |
| Carat Weight            | 1.00 CARAT               |
| Color Grade             | G                        |
| Clarity Grade           | VVS 2                    |
| Cut Grade               | IDEAL                    |

### ADDITIONAL GRADING INFORMATION

|                |   |
|----------------|---|
| Polish         | EXCELLENT   |
| Symmetry       | EXCELLENT   |
| Fluorescence   | NONE  |
| Inscription(s) |  LG747521396 |

Comments: This Laboratory Grown Diamond was created by Chemical Vapor Deposition (CVD) growth process.  
Type IIa

## PROPORTIONS



Sample Image Used

## COLOR

D E F G H I J Faint Very Light Light

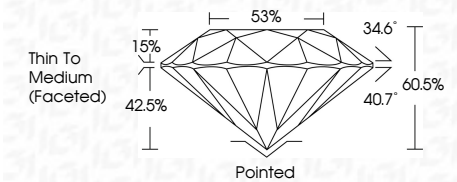
## CLARITY

| FL       | IF                  | VVS <sup>1-2</sup>          | VS <sup>1-2</sup>      | SI <sup>1-2</sup> | I <sup>1-3</sup> |
|----------|---------------------|-----------------------------|------------------------|-------------------|------------------|
| Flawless | Internally Flawless | Very Very Slightly Included | Very Slightly Included | Slightly Included | Included         |

## LABORATORY GROWN DIAMOND REPORT



|                         |                          |
|-------------------------|--------------------------|
| November 20, 2025       |                          |
| IGI Report Number       | LG747521396              |
| Description             | LABORATORY GROWN DIAMOND |
| Shape and Cutting Style | ROUND BRILLIANT          |
| Measurements            | 6.48 - 6.51 X 3.93 MM    |
| GRADING RESULTS         |                          |
| Carat Weight            | 1.00 CARAT               |
| Color Grade             | G                        |
| Clarity Grade           | VVS 2                    |
| Cut Grade               | IDEAL                    |



### ADDITIONAL GRADING INFORMATION

|   |   |
|---|---|
| Polish  | EXCELLENT   |
| Symmetry  | EXCELLENT   |
| Fluorescence  | NONE  |
| Inscription(s)  |  LG747521396 |
| <p>Comments: This Laboratory Grown Diamond was created by Chemical Vapor Deposition (CVD) growth process.</p> <p>Type IIa</p> |   |



IGI



© IGI 2020, International Gemological Institute

FD - 10 20

**www.igi.org**

THIS DOCUMENT WAS PRODUCED WITH THE FOLLOWING SECURITY MEASURES: SPECIAL DOCUMENT PAPER, INK SCREENS, WATERMARK BACKGROUND DESIGNS, HOLOGRAM AND OTHER SECURITY FEATURES NOT LISTED AND DO EXCEED DOCUMENT SECURITY INDUSTRY GUIDELINES

November 20, 2025  
IGI Report No LG747521396  
ROUND BRILLIANT

|                       |                |                        |
|-----------------------|----------------|------------------------|
| 6.48 - 6.51 X 5.93 MM | Carat Weight   | 1.00 CARAT             |
|                       | Color Grade    | G                      |
|                       | Clarity Grade  | VVS 2                  |
|                       | Cut Grade      | IDEAL                  |
|                       | Depth          | 60.6%                  |
|                       | Table          | 55%                    |
|                       | Girdle         | Thin To Medium (faced) |
|                       | Culet          | Pointed                |
|                       | Polish         | EXCELLENT              |
|                       | Symmetry       | EXCELLENT              |
|                       | Fluorescence   | NONE                   |
|                       | Inclusions (s) | 4881 (57.67) 1905      |

**Comments:**  
This Laboratory Grown Diamond was  
credited by Chemical Vapor Deposition  
(CVD) growth process.  
Type IIa