



ELECTRONIC COPY

LG747527951
Report verification at igi.org



January 19, 2026
IGI Report Number **LG747527951**
Description **LABORATORY GROWN DIAMOND**
Shape and Cutting Style **CUSHION MODIFIED BRILLIANT**
Measurements **12.32 X 8.60 X 6.22 MM**
GRADING RESULTS
Carat Weight **6.07 CARATS**
Color Grade **FANCY VIVID RED**
Clarity Grade **VS 1**

LABORATORY GROWN DIAMOND REPORT

January 19, 2026
IGI Report Number **LG747527951**
Description **LABORATORY GROWN DIAMOND**
Shape and Cutting Style **CUSHION MODIFIED BRILLIANT**
Measurements **12.32 X 8.60 X 6.22 MM**

GRADING RESULTS

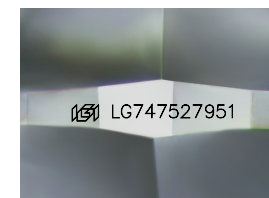
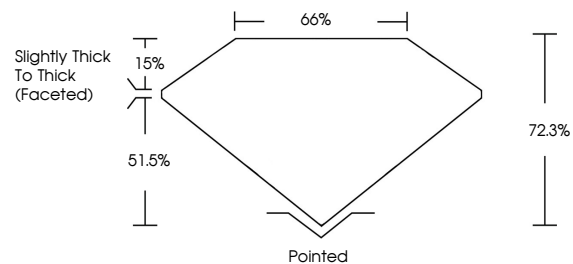
Carat Weight **6.07 CARATS**
Color Grade **FANCY VIVID RED**
Clarity Grade **VS 1**

ADDITIONAL GRADING INFORMATION

Polish **EXCELLENT**
Symmetry **EXCELLENT**
Fluorescence **STRONG**
Inscription(s) **IGI LG747527951**

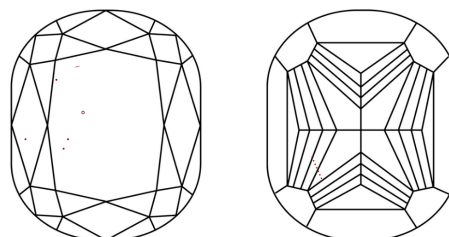
Comments: This Laboratory Grown Diamond was created by Chemical Vapor Deposition (CVD) growth process.
Indications of post-growth treatment.

PROPORTIONS



Sample Image Used

CLARITY CHARACTERISTICS



KEY TO SYMBOLS

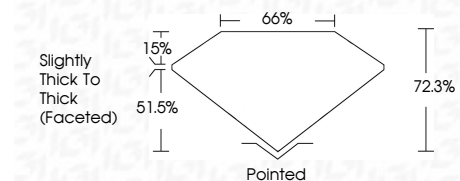
Red symbols indicate internal characteristics.
Green symbols indicate external characteristics.

COLOR

D E F G H I J Faint Very Light Light

CLARITY

FL	IF	VS ¹⁻²	VS ¹⁻²	SI ¹⁻²	I ¹⁻³
Flawless	Internally Flawless	Very Very Slightly Included	Very Slightly Included	Slightly Included	Included



ADDITIONAL GRADING INFORMATION

Polish **EXCELLENT**
Symmetry **EXCELLENT**
Fluorescence **STRONG**
Inscription(s) **IGI LG747527951**
Comments: This Laboratory Grown Diamond was created by Chemical Vapor Deposition (CVD) growth process.
Indications of post-growth treatment.



January 19, 2026
IGI Report No LG747527951
CUSHION MODIFIED BRILLIANT
12.32 X 8.60 X 6.22 MM
6.07 CARATS
FANCY VIVID RED
VS 1
72.3%
65%
Slightly Thick To Thick (Faceted)
Pointed
EXCELLENT
EXCELLENT
STRONG
IGI LG747527951

Comments: This Laboratory Grown Diamond was created by Chemical Vapor Deposition (CVD) growth process.
Indications of post-growth treatment.