



ELECTRONIC COPY

LG747544331
Report verification at igi.org



November 7, 2025

IGI Report Number **LG747544331**

Description **LABORATORY GROWN DIAMOND**

Shape and Cutting Style **ROUND BRILLIANT**

Measurements **8.69 - 8.75 X 5.51 MM**

GRADING RESULTS

Carat Weight **2.58 CARATS**

Color Grade **D**

Clarity Grade **VVS 2**

Cut Grade **EXCELLENT**

November 7, 2025
IGI Report Number **LG747544331**
Description **LABORATORY GROWN DIAMOND**
Shape and Cutting Style **ROUND BRILLIANT**
Measurements **8.69 - 8.75 X 5.51 MM**

GRADING RESULTS

Carat Weight **2.58 CARATS**

Color Grade **D**

Clarity Grade **VVS 2**

Cut Grade **EXCELLENT**

ADDITIONAL GRADING INFORMATION

Polish **EXCELLENT**

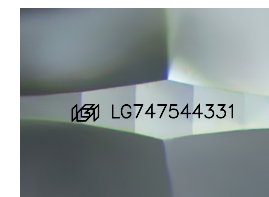
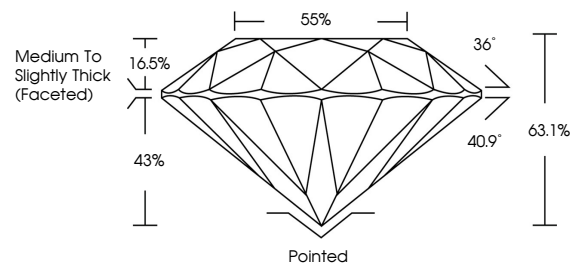
Symmetry **EXCELLENT**

Fluorescence **NONE**

Inscription(s) **IGI LG747544331**

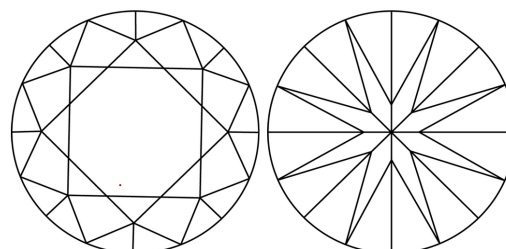
Comments: This Laboratory Grown Diamond was created by Chemical Vapor Deposition (CVD) growth process. Type IIa

PROPORTIONS



Sample Image Used

CLARITY CHARACTERISTICS



KEY TO SYMBOLS

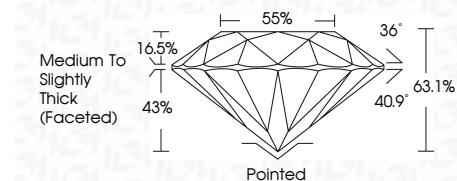
Red symbols indicate internal characteristics.
Green symbols indicate external characteristics.

COLOR

D E F G H I J Faint Very Light Light

CLARITY

FL	IF	VVS ¹⁻²	VS ¹⁻²	SI ¹⁻²	I ¹⁻³
Flawless	Internally Flawless	Very Very Slightly Included	Very Slightly Included	Slightly Included	Included



ADDITIONAL GRADING INFORMATION

Polish **EXCELLENT**

Symmetry **EXCELLENT**

Fluorescence **NONE**

Inscription(s) **IGI LG747544331**

Comments: This Laboratory Grown Diamond was created by Chemical Vapor Deposition (CVD) growth process. Type IIa



IGI



November 7, 2025	IGI Report No LG747544331	2.58 CARATS	D
ROUND BRILLIANT	8.69 - 8.75 X 5.51 MM	VVS 2	EXCELLENT
Carat Weight	Color Grade	Clarity Grade	Depth
8.69 - 8.75 X 5.51 MM	D	VVS 2	63.1%
Color Grade	Cut Grade	Table	Grade
D	EXCELLENT	86%	Medium To Slightly Thick (Faceted)
Clarity Grade	Polish	Culet	Pointed
VVS 2	EXCELLENT	None	EXCELLENT
Depth	Symmetry	Fluorescence	EXCELLENT
63.1%	EXCELLENT	NONE	NONE
Table	Inscription(s)	Comments:	IGI LG747544331
Grade	IGI LG747544331	This Laboratory Grown Diamond was created by Chemical Vapor Deposition (CVD) growth process.	Type IIa