



ELECTRONIC COPY

LG747568104 Report verification at igi.org



November 7, 2025 IGI Report Number LG747568104 Description LABORATORY GROWN DIAMOND Shape and Cutting Style ROUND BRILLIANT Measurements 10.78 - 10.82 X 6.86 MM GRADING RESULTS Carat Weight 4.98 CARATS Color Grade E Clarity Grade VVS 2 Cut Grade EXCELLENT

November 7, 2025 IGI Report Number LG747568104 Description LABORATORY GROWN DIAMOND Shape and Cutting Style ROUND BRILLIANT Measurements 10.78 - 10.82 X 6.86 MM

GRADING RESULTS

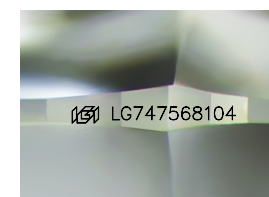
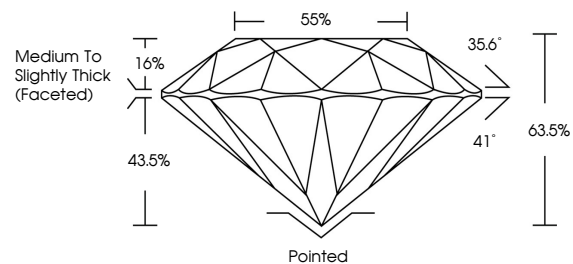
Carat Weight 4.98 CARATS Color Grade E Clarity Grade VVS 2 Cut Grade EXCELLENT

ADDITIONAL GRADING INFORMATION

Polish EXCELLENT Symmetry EXCELLENT Fluorescence NONE Inscription(s) IGI LG747568104

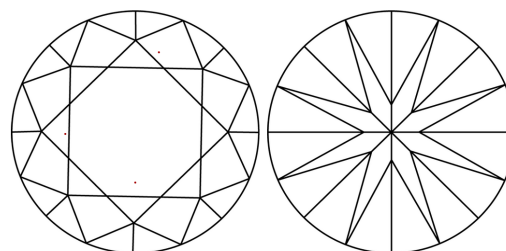
Comments: This Laboratory Grown Diamond was created by Chemical Vapor Deposition (CVD) growth process. Type IIa

PROPORTIONS



Sample Image Used

CLARITY CHARACTERISTICS



KEY TO SYMBOLS

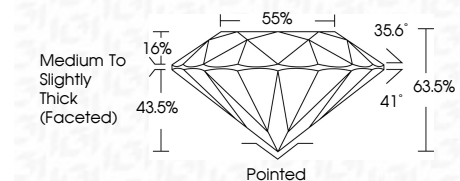
Red symbols indicate internal characteristics. Green symbols indicate external characteristics.

COLOR

D E F G H I J Faint Very Light Light

CLARITY

FL IF VVS 1-2 VS 1-2 SI 1-2 I 1-3 Flawless Internally Flawless Very Very Slightly Included Very Slightly Included Slightly Included Included



ADDITIONAL GRADING INFORMATION

Polish EXCELLENT Symmetry EXCELLENT Fluorescence NONE Inscription(s) IGI LG747568104 Comments: This Laboratory Grown Diamond was created by Chemical Vapor Deposition (CVD) growth process. Type IIa



November 7, 2025 IGI Report No LG747568104 ROUND BRILLIANT 4.98 CARATS E VVS 2 EXCELLENT 63.5% 55% Medium To Slightly Thick (Faceted) Pointed EXCELLENT EXCELLENT NONE IGI LG747568104 Comments: This Laboratory Grown Diamond was created by Chemical Vapor Deposition (CVD) growth process. Type IIa