



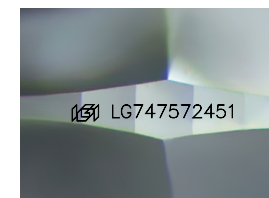
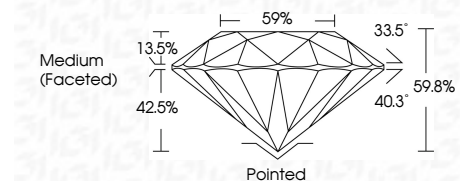
ELECTRONIC COPY

LG747572451
Report verification at igi.org



November 24, 2025
IGI Report Number LG747572451
Description LABORATORY GROWN DIAMOND
Shape and Cutting Style ROUND BRILLIANT
Measurements 10.26 - 10.33 X 6.16 MM

GRADING RESULTS
Carat Weight 4.08 CARATS
Color Grade E
Clarity Grade VS 2
Cut Grade IDEAL



Sample Image Used

ADDITIONAL GRADING INFORMATION
Polish EXCELLENT
Symmetry EXCELLENT
Fluorescence NONE
Inscription(s) IGI LG747572451
Comments: This Laboratory Grown Diamond was created by Chemical Vapor Deposition (CVD) growth process. Type IIa



November 24, 2025
IGI Report No LG747572451
ROUND BRILLIANT
4.08 CARATS E
10.26 - 10.33 X 6.16 MM
Color Grade VS 2
Clarity Grade IDEAL
Depth 59.8%
Table 59%
Girdle Medium (Faceted)
Culet Pointed
Polish EXCELLENT
Symmetry EXCELLENT
Fluorescence NONE
Inscription(s) IGI LG747572451
Comments: This Laboratory Grown Diamond was created by Chemical Vapor Deposition (CVD) growth process. Type IIa

LABORATORY GROWN DIAMOND REPORT

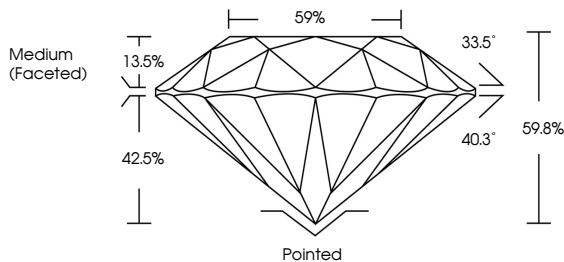
November 24, 2025
IGI Report Number LG747572451
Description LABORATORY GROWN DIAMOND
Shape and Cutting Style ROUND BRILLIANT
Measurements 10.26 - 10.33 X 6.16 MM

GRADING RESULTS
Carat Weight 4.08 CARATS
Color Grade E
Clarity Grade VS 2
Cut Grade IDEAL

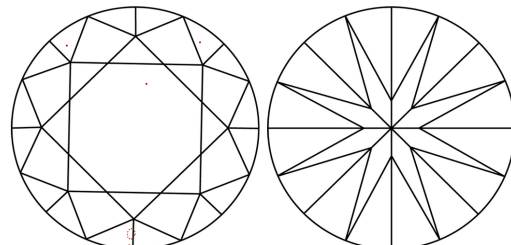
ADDITIONAL GRADING INFORMATION
Polish EXCELLENT
Symmetry EXCELLENT
Fluorescence NONE
Inscription(s) IGI LG747572451

Comments: This Laboratory Grown Diamond was created by Chemical Vapor Deposition (CVD) growth process. Type IIa

PROPORTIONS



CLARITY CHARACTERISTICS



KEY TO SYMBOLS
Red symbols indicate internal characteristics.
Green symbols indicate external characteristics.

Table with 10 columns: D, E, F, G, H, I, J, Faint, Very Light, Light

Table with 6 columns: FL, IF, VS 1-2, VS 1-2, SI 1-2, I 1-3

