



ELECTRONIC COPY

LG747572465
Report verification at igi.org



November 24, 2025
IGI Report Number **LG747572465**
Description **LABORATORY GROWN DIAMOND**
Shape and Cutting Style **CUSHION MODIFIED BRILLIANT**
Measurements **11.91 X 8.28 X 5.74 MM**
GRADING RESULTS
Carat Weight **4.71 CARATS**
Color Grade **FANCY VIVID YELLOW**
Clarity Grade **VS 1**

November 24, 2025
IGI Report Number **LG747572465**
Description **LABORATORY GROWN DIAMOND**
Shape and Cutting Style **CUSHION MODIFIED BRILLIANT**
Measurements **11.91 X 8.28 X 5.74 MM**

GRADING RESULTS

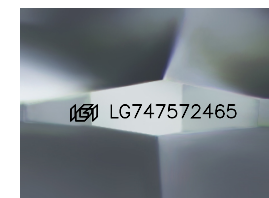
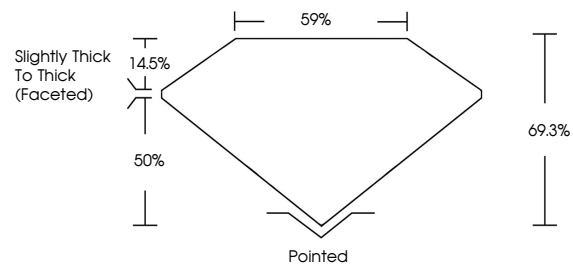
Carat Weight **4.71 CARATS**
Color Grade **FANCY VIVID YELLOW**
Clarity Grade **VS 1**

ADDITIONAL GRADING INFORMATION

Polish **EXCELLENT**
Symmetry **EXCELLENT**
Fluorescence **NONE**
Inscription(s) **IGI LG747572465**

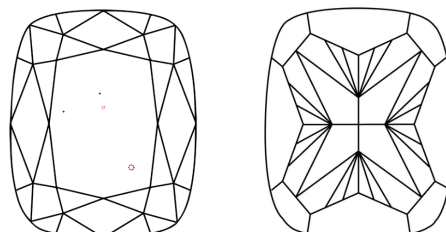
Comments: This Laboratory Grown Diamond was created by Chemical Vapor Deposition (CVD) growth process.

PROPORTIONS



Sample Image Used

CLARITY CHARACTERISTICS



KEY TO SYMBOLS

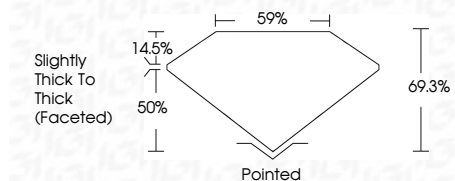
Red symbols indicate internal characteristics.
Green symbols indicate external characteristics.

COLOR

D E F G H I J Faint Very Light Light

CLARITY

FL	IF	VS ¹⁻²	VS ¹⁻²	SI ¹⁻²	I ¹⁻³
Flawless	Internally Flawless	Very Very Slightly Included	Very Slightly Included	Slightly Included	Included



ADDITIONAL GRADING INFORMATION

Polish **EXCELLENT**
Symmetry **EXCELLENT**
Fluorescence **NONE**
Inscription(s) **IGI LG747572465**
Comments: This Laboratory Grown Diamond was created by Chemical Vapor Deposition (CVD) growth process.



IGI



November 24, 2025
IGI Report No **LG747572465**
CUSHION MODIFIED BRILLIANT
11.91 X 8.28 X 5.74 MM
Carat Weight **4.71 CARATS**
Color Grade **FANCY VIVID YELLOW**
Clarity Grade **VS 1**
Depth **69.3%**
Table **59%**
Girdle **Slightly Thick To Thick (Faceted)**
Culet **Pointed**
Polish **EXCELLENT**
Symmetry **EXCELLENT**
Fluorescence **NONE**
Inscription(s) **IGI LG747572465**
Comments: This Laboratory Grown Diamond was created by Chemical Vapor Deposition (CVD) growth process.