



Light Performance Grade: Exceptional



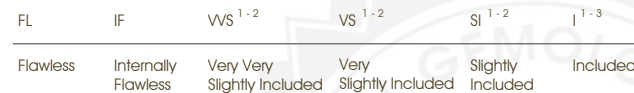
Structured Light Environment Representation



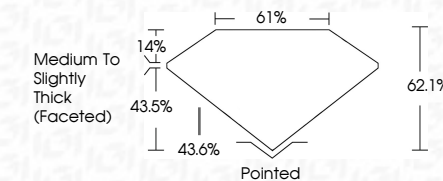
COLOR



CLARITY



November 11, 2025
IGI Report Number LG747599982
Description LABORATORY GROWN DIAMOND
Shape and Cutting Style OVAL BRILLIANT
Measurements 12.47 X 8.23 X 5.11 MM
GRADING RESULTS
Carat Weight 3.30 CARATS
Color Grade F
Clarity Grade VVS 1



ADDITIONAL GRADING INFORMATION
Polish EXCELLENT
Symmetry EXCELLENT
Fluorescence NONE
Inscription(s) IGI LG747599982
Comments: This Laboratory Grown Diamond was created by Chemical Vapor Deposition (CVD) growth process.
Type IIa



November 11, 2025
IGI Report No LG747599982
OVAL BRILLIANT
12.47 X 8.23 X 5.11 MM
Carat Weight 3.30 CARATS
Color Grade F
Clarity Grade VVS 1
Table 62.1%
Girdle 61%
Medium To Slightly Thick (Faceted)
Culet Pointed
Polish EXCELLENT
Symmetry EXCELLENT
Fluorescence NONE
Inscription(s) IGI LG747599982
Comments: This Laboratory Grown Diamond was created by Chemical Vapor Deposition (CVD) growth process.
Type IIa

ELECTRONIC COPY
LABORATORY GROWN DIAMOND REPORT

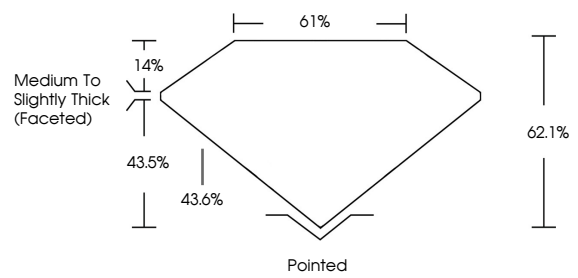
November 11, 2025
IGI Report Number LG747599982
Description LABORATORY GROWN DIAMOND
Shape and Cutting Style OVAL BRILLIANT
Measurements 12.47 x 8.23 x 5.11 mm

GRADING RESULTS
Carat Weight 3.30 CARATS
Color Grade F
Clarity Grade VVS 1

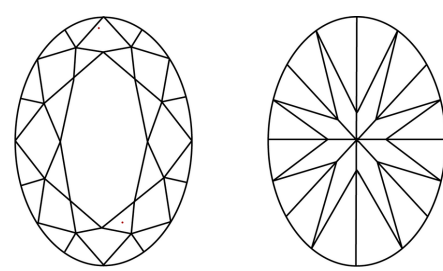
ADDITIONAL GRADING INFORMATION
Polish EXCELLENT
Symmetry EXCELLENT
Fluorescence NONE
Inscription(s) IGI LG747599982

Comments: This Laboratory Grown Diamond was created by Chemical Vapor Deposition (CVD) growth process.
Type IIa

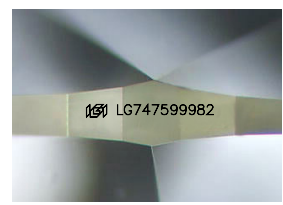
PROPORTIONS



CLARITY CHARACTERISTICS



KEY TO SYMBOLS
Red symbols indicate internal characteristics.
Green symbols indicate external characteristics.



Sample Image Used

