



**INTERNATIONAL  
GEMOLOGICAL  
INSTITUTE**

**LABORATORY GROWN DIAMOND REPORT**

November 19, 2025  
 IGI Report Number **LG748504468**  
 Description **LABORATORY GROWN DIAMOND**  
 Shape and Cutting Style **ROUND BRILLIANT**  
 Measurements **4.72 - 4.78 X 2.89 MM**

**GRADING RESULTS**

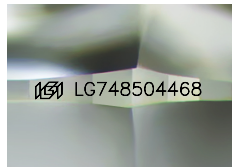
Carat Weight **0.39 CARAT**  
 Color Grade **E**  
 Clarity Grade **VS 2**  
 Cut Grade **VERY GOOD**

**ADDITIONAL GRADING INFORMATION**

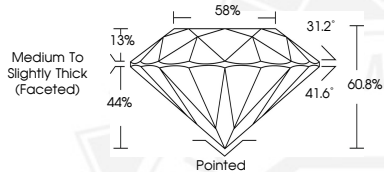
Polish **VERY GOOD**  
 Symmetry **VERY GOOD**  
 Fluorescence **NONE**  
 Inscription(s) **IGI LG748504468**

Comments: As Grown - No indication of post-growth treatment.  
 This Laboratory Grown Diamond was created by High Pressure High  
 Temperature (HPHT) growth process.  
 Type II

**ELECTRONIC COPY**



Sample Image Used



November 19, 2025  
 IGI Report Number **LG748504468**  
**ROUND BRILLIANT**  
**LABORATORY GROWN DIAMOND**  
**4.72 - 4.78 X 2.89 MM**  
 Carat Weight **0.39 CARAT**  
 Color Grade **E**  
 Clarity Grade **VS 2**  
 Cut Grade **VERY GOOD**  
 Polish **VERY GOOD**  
 Symmetry **VERY GOOD**  
 Fluorescence **NONE**  
 Inscription(s) **IGI LG748504468**

Comments: As Grown - No indication of post-growth treatment. This Laboratory Grown Diamond was created by High Pressure High Temperature (HPHT) growth process. Type II



November 19, 2025  
 IGI Report Number **LG748504468**  
**ROUND BRILLIANT**  
**LABORATORY GROWN DIAMOND**  
**4.72 - 4.78 X 2.89 MM**  
 Carat Weight **0.39 CARAT**  
 Color Grade **E**  
 Clarity Grade **VS 2**  
 Cut Grade **VERY GOOD**  
 Polish **VERY GOOD**  
 Symmetry **VERY GOOD**  
 Fluorescence **NONE**  
 Inscription(s) **IGI LG748504468**

Comments: As Grown - No indication of post-growth treatment. This Laboratory Grown Diamond was created by High Pressure High Temperature (HPHT) growth process. Type II



THIS DOCUMENT WAS PRODUCED WITH THE FOLLOWING SECURITY MEASURES: SPECIAL DOCUMENT PAPER, INK SCREENS, WATERMARK, BACKGROUND DESIGNS, HOLOGRAM AND OTHER SECURITY FEATURES NOT LISTED AND DO EXCEED DOCUMENT SECURITY INDUSTRY GUIDELINES.

For terms & conditions and to verify this report, please visit [www.igi.org](http://www.igi.org)