



LABORATORY GROWN DIAMOND REPORT

November 13, 2025
 IGI Report Number **LG749509041**
 Description **LABORATORY GROWN DIAMOND**
 Shape and Cutting Style **CUT CORNERED RECTANGULAR MODIFIED
BRILLIANT**
 Measurements **5.96 X 4.15 X 2.63 MM**

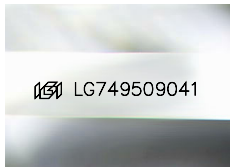
GRADING RESULTS

Carat Weight **0.60 CARAT**
 Color Grade **D**
 Clarity Grade **INTERNALLY FLAWLESS**
 Cut Grade **VERY GOOD**

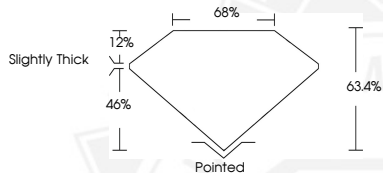
ADDITIONAL GRADING INFORMATION

Polish **EXCELLENT**
 Symmetry **EXCELLENT**
 Fluorescence **NONE**
 Inscription(s) **IGI LG749509041**

Comments: As Grown - No indication of post-growth treatment.
 This Laboratory Grown Diamond was created by High Pressure High
 Temperature (HPHT) growth process.
 Type II



Sample Image Used



November 13, 2025
 IGI Report Number **LG749509041**
 CUT CORNERED RECTANGULAR
 MODIFIED BRILLIANT
 LABORATORY GROWN DIAMOND
5.96 X 4.15 X 2.63 MM
 Carat Weight **0.60 CARAT**
 Color Grade **D**
 Clarity Grade **I.F.**
 Cut Grade **VERY GOOD**
 Polish **EXCELLENT**
 Symmetry **EXCELLENT**
 Fluorescence **NONE**
 Inscription(s) **IGI LG749509041**

Comments: As Grown - No indication of post-growth treatment. This Laboratory Grown Diamond was created by High Pressure High Temperature (HPHT) growth process. Type II



November 13, 2025
 IGI Report Number **LG749509041**
 CUT CORNERED RECTANGULAR
 MODIFIED BRILLIANT
 LABORATORY GROWN DIAMOND
5.96 X 4.15 X 2.63 MM
 Carat Weight **0.60 CARAT**
 Color Grade **D**
 Clarity Grade **I.F.**
 Cut Grade **VERY GOOD**
 Polish **EXCELLENT**
 Symmetry **EXCELLENT**
 Fluorescence **NONE**
 Inscription(s) **IGI LG749509041**

Comments: As Grown - No indication of post-growth treatment. This Laboratory Grown Diamond was created by High Pressure High Temperature (HPHT) growth process. Type II

THIS DOCUMENT WAS PRODUCED WITH THE FOLLOWING SECURITY MEASURES: SPECIAL DOCUMENT PAPER, INK SCREENS, WATERMARK, BACKGROUND DESIGNS, HOLOGRAM AND OTHER SECURITY FEATURES NOT LISTED AND DO EXCEED DOCUMENT SECURITY INDUSTRY GUIDELINES.