



# INTERNATIONAL GEMOLOGICAL INSTITUTE

ELECTRONIC COPY

## LABORATORY GROWN DIAMOND REPORT

November 13, 2025

IGI Report Number

LG749509045

Description

LABORATORY GROWN DIAMOND

Shape and Cutting Style

CUT CORNERED RECTANGULAR MODIFIED  
BRILLIANT

Measurements

5.04 X 3.45 X 2.35 MM

### GRADING RESULTS

Carat Weight

0.36 CARAT

Color Grade

D

Clarity Grade

INTERNALLY FLAWLESS

Cut Grade

VERY GOOD

### ADDITIONAL GRADING INFORMATION

Polish

EXCELLENT

Symmetry

EXCELLENT

Fluorescence

NONE

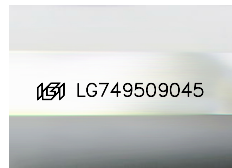
Inscription(s)

IGI LG749509045

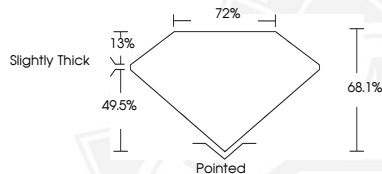
Comments: As Grown - No indication of post-growth treatment.

This Laboratory Grown Diamond was created by High Pressure High Temperature (HPHT) growth process.

Type II



Sample Image Used



November 13, 2025

IGI Report Number LG749509045

CUT CORNERED RECTANGULAR  
MODIFIED BRILLIANT

LABORATORY GROWN DIAMOND

5.04 X 3.45 X 2.35 MM

Carat Weight 0.36 CARAT

Color Grade D

Clarity Grade I.F.

Cut Grade VERY GOOD

Polish EXCELLENT

Symmetry EXCELLENT

Fluorescence NONE

Inscription(s) IGI LG749509045

Comments: As Grown - No indication of post-growth treatment. This Laboratory Grown Diamond was created by High Pressure High Temperature (HPHT) growth process. Type II



November 13, 2025

IGI Report Number LG749509045

CUT CORNERED RECTANGULAR  
MODIFIED BRILLIANT

LABORATORY GROWN DIAMOND

5.04 X 3.45 X 2.35 MM

Carat Weight 0.36 CARAT

Color Grade D

Clarity Grade I.F.

Cut Grade VERY GOOD

Polish EXCELLENT

Symmetry EXCELLENT

Fluorescence NONE

Inscription(s) IGI LG749509045

Comments: As Grown - No indication of post-growth treatment. This Laboratory Grown Diamond was created by High Pressure High Temperature (HPHT) growth process. Type II



THIS DOCUMENT WAS PRODUCED WITH THE FOLLOWING SECURITY MEASURES: SPECIAL DOCUMENT PAPER, INK SCREENS, WATERMARK, BACKGROUND DESIGNS, HOLOGRAM AND OTHER SECURITY FEATURES NOT LISTED AND DO EXCEED DOCUMENT SECURITY INDUSTRY GUIDELINES.

For terms & conditions and to verify this report, please visit [www.igi.org](http://www.igi.org)