



November 13, 2025

**IGI Report Number LG749509046**  
**CUT CORNERED RECTANGULAR  
MODIFIED BRILLIANT**  
**LABORATORY GROWN DIAMOND**  
**4.95 X 3.46 X 2.32 MM**

**Carat Weight 0.35 CARAT**  
**Color Grade D**  
**Clarity Grade VVS 2**  
**Cut Grade VERY GOOD**  
**Polish EXCELLENT**  
**Symmetry VERY GOOD**  
**Fluorescence NONE**  
**Inscription(s) IGI LG749509046**

Comments: As Grown - No indication of post-growth treatment. This Laboratory Grown Diamond was created by High Pressure High Temperature (HPHT) growth process. Type II

**LABORATORY GROWN DIAMOND REPORT**

November 13, 2025

IGI Report Number **LG749509046**

Description **LABORATORY GROWN DIAMOND**

Shape and Cutting Style **CUT CORNERED RECTANGULAR MODIFIED  
BRILLIANT**

Measurements **4.95 X 3.46 X 2.32 MM**

**GRADING RESULTS**

Carat Weight **0.35 CARAT**

Color Grade **D**

Clarity Grade **VVS 2**

Cut Grade **VERY GOOD**

**ADDITIONAL GRADING INFORMATION**

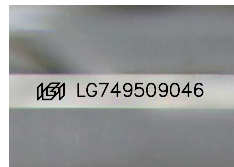
Polish **EXCELLENT**

Symmetry **VERY GOOD**

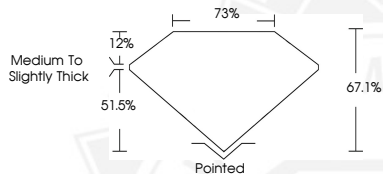
Fluorescence **NONE**

Inscription(s) **IGI LG749509046**

Comments: As Grown - No indication of post-growth treatment. This Laboratory Grown Diamond was created by High Pressure High Temperature (HPHT) growth process. Type II



Sample Image Used



November 13, 2025

**IGI Report Number LG749509046**  
**CUT CORNERED RECTANGULAR  
MODIFIED BRILLIANT**  
**LABORATORY GROWN DIAMOND**  
**4.95 X 3.46 X 2.32 MM**

**Carat Weight 0.35 CARAT**  
**Color Grade D**  
**Clarity Grade VVS 2**  
**Cut Grade VERY GOOD**  
**Polish EXCELLENT**  
**Symmetry VERY GOOD**  
**Fluorescence NONE**  
**Inscription(s) IGI LG749509046**

Comments: As Grown - No indication of post-growth treatment. This Laboratory Grown Diamond was created by High Pressure High Temperature (HPHT) growth process. Type II



THIS DOCUMENT WAS PRODUCED WITH THE FOLLOWING SECURITY MEASURES: SPECIAL DOCUMENT PAPER, INK SCREENS, WATERMARK, BACKGROUND DESIGNS, HOLOGRAM AND OTHER SECURITY FEATURES NOT LISTED AND DO EXCEED DOCUMENT SECURITY INDUSTRY GUIDELINES.