



November 12, 2025

IGI Report Number **LG749514517**

**ROUND BRILLIANT
LABORATORY GROWN DIAMOND**
4.66 - 4.68 X 2.82 MM

Carat Weight	0.38 CARAT
Color Grade	D
Clarity Grade	VS 2
Cut Grade	IDEAL
Polish	EXCELLENT
Symmetry	EXCELLENT
Fluorescence	NONE
Inscription(s)	IGI LG749514517

Comments: This Laboratory Grown Diamond was created by Chemical Vapor Deposition (CVD) growth process. Type IIa

LABORATORY GROWN DIAMOND REPORT

November 12, 2025
IGI Report Number **LG749514517**
Description **LABORATORY GROWN DIAMOND**
Shape and Cutting Style **ROUND BRILLIANT**
Measurements **4.66 - 4.68 X 2.82 MM**

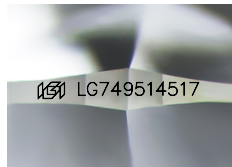
GRADING RESULTS

Carat Weight **0.38 CARAT**
Color Grade **D**
Clarity Grade **VS 2**
Cut Grade **IDEAL**

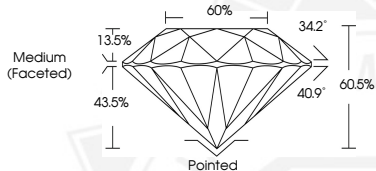
ADDITIONAL GRADING INFORMATION

Polish **EXCELLENT**
Symmetry **EXCELLENT**
Fluorescence **NONE**
Inscription(s) **IGI LG749514517**

Comments: This Laboratory Grown Diamond was created by Chemical Vapor Deposition (CVD) growth process. Type IIa



Sample Image Used



November 12, 2025

IGI Report Number **LG749514517**

**ROUND BRILLIANT
LABORATORY GROWN DIAMOND**
4.66 - 4.68 X 2.82 MM

Carat Weight	0.38 CARAT
Color Grade	D
Clarity Grade	VS 2
Cut Grade	IDEAL
Polish	EXCELLENT
Symmetry	EXCELLENT
Fluorescence	NONE
Inscription(s)	IGI LG749514517

Comments: This Laboratory Grown Diamond was created by Chemical Vapor Deposition (CVD) growth process. Type IIa



THIS DOCUMENT WAS PRODUCED WITH THE FOLLOWING SECURITY MEASURES: SPECIAL DOCUMENT PAPER, INK SCREENS, WATERMARK, BACKGROUND DESIGNS, HOLOGRAM AND OTHER SECURITY FEATURES NOT LISTED AND DO EXCEED DOCUMENT SECURITY INDUSTRY GUIDELINES.